



Tole It To The Mountains

www.wmdpghn.org

The Official Newsletter of the White Mountain Decorative Painters' Guild

An Affiliated Chapter of the Society of Decorative Painters

Volume 35, Issue 3

editor@wmdpghn.org

August 2018

Donna's President's Palette...

It has been a long time since I wrote news for the last newsletter. The board meeting has been held at different homes due to board members' distances from each other. I picked August for my turn to host, figuring the longest drive ought to be saved for a beautiful summer day. Instead, torrential rain made driving difficult for some but they didn't turn back. We had a productive meeting and great potluck lunch. I was happy the day had turned sunny for their drives home. Our Oct 13, 2018 meeting will be held at Linda Connors' in Concord and our December meeting has been changed to Dec. 15 at Dotty Pullo's in Londonderry.

We were given excited descriptions of squares that the volunteers have been painting for the 2019 Quilt Raffle. It is now in the hands of Carolyn Swasey to transform into a finished quilt. Many thanks to Carolyn for volunteering this idea and coordinating our volunteer painters. Thanks also go to Suzi Franklin for hosting and teaching the June colored pencil workshop at her Wells, Maine home. We had a wonderful time and were able to finish two projects before heading off to an early seafood dinner at Suzi's favorite place: The Fisherman's Catch. Sue Hodgkins was happy not only to attend but also to report a profit on this workshop.

In May, members voted to set chapter dues to \$15. Recently, we have only charged \$10, despite a standing rule that dues are \$20. Despite income from our general meeting lunch buffets, it only slightly offsets the cost to rent the hotel meeting room. We have been investigating alternatives but have decided to try out some alternative locations for a seminar to see how it works out before committing to a new location for general meetings in 2019. We plan to keep meeting at Country Inn and Suites in Bedford for 2019.

It's time to think about our budget for 2019. An unforeseen expenditure totaling \$100 will be made to the Society of Decorative Painters International Museum of Decorative Painting to help defray the unexpected costs to secure the artwork from the National Museum of Decorative Painting in Atlanta. Artwork in this museum was originally in Wichita but 36 years ago it was decided to move the collection to Atlanta. SDP started a new col-

lection and museum which is a separate tax entity. The SDP Foundation Crown Program offers a giving opportunity for its members and chapters to be acknowledged for supporting SDP and the art of Decorative Painting. Donations will go to SDP's Foundation, which is a 501 (C)(3) and is tax-deductible. Sue Bowers and Twister Brushes of Oklahoma challenged all other SDP chapters to donate. On Fridays, SDP shares the excitement of opening boxes of beautiful treasures on Facebook. We hope to share these videos at the September meeting. I expect there is going to be a fabulous display of museum pieces in Wichita during the 2019 Annual SDP Conference.

Janice Tomlin expects to have the Betty Caithness clock, our 2018 Annual Raffle Prize finished and on display at the September meeting. You know that this is going to be an heirloom museum quality piece. Former member Jill Green has donated a variety of surfaces, packets and painting supplies to the chapter. Jacque Seasted and Marilyn Moses have sorted and photographed things and will select a surface and matching packet for the meeting raffle for people who buy tickets that day. (The winning ticket will still go into the Annual Raffle drawing.) More hands went up among the board members for a special project that involved some of the other donated items. But, my lips are sealed for the time being.

Kris Lafayette and Melanie Knox are looking for candidates for our November election. The most important skill is listening and sharing ideas. It's together that we make things happen through combined talents and ener-

Memory Boxes...

A big thank you to all who have used their talents to paint Memory Boxes. You have comforted families at their saddest times. Our last gifts were delivered to Exeter Hospital and St. Joseph Hospital (Nashua) and each gift was warmly received. New boxes have been purchased and will be available at the May meeting or perhaps you have a box in your stash that you would like to use. It is always inspiring to see your finished boxes - the painting and beautifully finished interiors! Amazing! Kathy Tanguay recently contributed two beautiful pieces. Thank you!

Marilyn and Jacque

Sue's Scribbles...

I hope you have been having a wonderful summer in spite of the oppressing heat and humidity. I keep telling myself that at least I don't have to shovel the rain.

We had a great time at Suzi Franklin's colored pencil goldfinch workshop in Wells Maine. We colored not only the gold finch but a blue bird as well. We finished the goldfinch early enough for Suzi to offer us another project! Bonus! We had a great day with the colored pencils and everyone just about finished both of them. We topped off the day by going to a yummy seafood restaurant where the seafood was awesome. Any day that you can pencil or paint, have a view and whiff of the beach and eat seafood is a good day indeed. If Suzi offers another workshop, count me in!

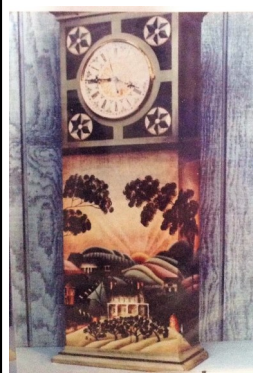
The September meeting is fast approaching and we've had some last minute changes to the afternoon schedule. Originally, Wood Item and More was scheduled to come with a Trunk Show. They are no longer able to come so we have done a little rearranging and Cindy Harrison will be teaching the project that she originally was going to do for an upcoming workshop. For those, like myself, who are disappointed that Wood Items and More is not coming, fear not! We already have them scheduled for 2019.

The design we will be painting in September is an original by Cindy. The design is perfect for the September apple season. It is a heart shaped frame with an apple orchard scene. It looks like we will be doing some faux barn board and I think I also see some three dimension things going on. I love the design and can't wait to paint it. The design and paint list will be found elsewhere in the newsletter. Don't feel that you need to bring all of the paints if you don't have them—we like to share!

We have scheduled Arlene Linton for a weekend in January: specifically, the 19th and 20th. The projects are yet to be determined, but hopefully we will have more info on that at the meeting. We will be opening this seminar up to other chapters, so once we open registrations, you'll want to sign right up so as not to lose out on a seat!

Enjoy the day,
Sue

2018 Raffle News...



The raffle prize is a hand painted wall cabinet/clock donated and painted by our very own talented Janice Tomlin.

This item is in process of being completed. The cabinet measures 30" high, 11.25" wide and 5.5" deep. The bottom section opens, and has shelves. The landscape wraps around the 3 sides.

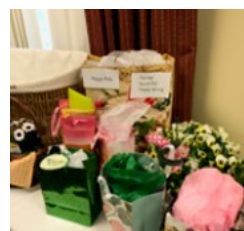
The cabinet will be painted in honor of Betty Caithness. Betty gave us years of beautiful patterns and pieces in the decorative art world. Prepare yourselves to buy many tickets in March and throughout the year so YOU can be the LUCKY WINNER!

Please start selling raffle tickets to family and friends.

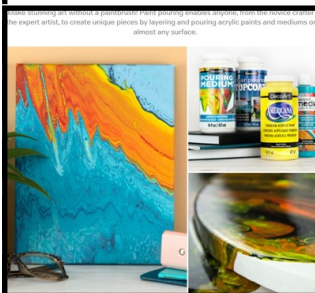
Susan Mangano

Secret Pals message....

Please do not forget to bring your Secret Pal's SURPRISE gift to the September 9th meeting.



Our wishes for a speedy recovery go to Larry Provencher who recently had surgery. He has turned our Secret Pal project over to Peg Daly. If you any questions about Secret Pals, please contact Peg. She will also be in charge of Secret Pals for 2019. If you aren't participating this year but would love to get one of those pretty gift bags, details and a 2019 sign up form will be in the next newsletter.



Deco Art Pouring Mediums

Deco Art Pouring projects appear to be growing in popularity.

VP Corner Sue's thank you

Thank you so much for sending me to the SDP Conference in May. It was a great time of year to get away to sunny Florida. I haven't been to National for many years, so it was an extra special treat to be able to go this year.

While there, I attended the annual meeting, which I believe is being covered elsewhere in this newsletter. I also went to the Chapters & Members Gathering where there were lots of fun giveaways and games. Each year, SDP tries to give chapters new ideas in a fun but informative way at this meeting. This year, we played Bingo with each square being a little tidbit of an idea. I didn't win, but had fun trying. I found that our Chapter already does many of the things that were being suggested. Yeah, us!

Some of the things that were discussed:

- * Ambassador Program – recruit a member and get a Visa card. After you bring in 5 members you are an Ambassador. Some chapters are looking at variations of the Ambassador Program to be implemented or used in their chapter.
- * Make with Paint Program – excerpt from SDP website -- “Make With Paint™ offers new and fun online classes for people who want to learn to paint! Each video series includes 3 easy do-it-yourself projects that teach progressive skill development and the how-tos of painting through video and written step-by-step instructions. At the end of each video lesson, you'll have a new set of skills and a finished project”. Chapters would get a packet and video to be used at a meeting. There would be an incentive back to Chapters based on how many kits were ordered.
- * Paint & Sips
- * Chapter Toolkits – the basic guide to starting a Chapter in PDF version is available online
- * Memory Boxes – Debbie Cole has designed a new piece to be used for memory boxes. It is a lovely design with a video and pattern to guide you through it. It should be available online soon if not already there.
- * SDP is doing more blast on social media and suggests that chapters do the same...Social Media – the wave of the future.
- * SDP Artful Connection – A place on Facebook to communicate with other members. It offers ideas, pictures etc.
- * Don't forget to use the SDP website as a resource. If you haven't been in a while, go check it out and see what's new.
- * Some chapters are offering free SDP memberships for its board members as an incentive to get more people involved.

I came away from the Gathering believing that our Chapter is very healthy. Yes, we have lost many of our members over the years but we are still very active and offer quality events. We can continue together on our painting journey by sticking together, helping where we can and sharing our love of painting.

Sue

Chapter Energizer message...

Kris asked me to share: She will have a special gift for a member who goes above and beyond, an “Attagirl” award at the September meeting. I wonder

News from SDP...

2019 Annual SDP Conference will be Party in the Heartland to be held in Wichita, KS May 13-18, 2019. Sandy McTier will be the conference artist. Special events in the evening for attendees only will be held at some local businesses. SDP's new office is in Wichita's Arts District. From past experience, I highly recommend a visit to Mrs. O'Leary's funky antique and crafts shop. I've used Wichita's free trolley for transportation so I expect SDP will arrange transportation between the hotel and the office/arts district. You should be able to start making hotel reservations now at the Hyatt Regency. It's a great hotel with attached convention center. With the recent transfer of the Atlanta Decorative Painting Museum to Wichita, expect to have a fantastic opportunity to see many of our decorative painting treasures from years past. I look forward to seeing what I remember as additions to the Decorative Arts Collection over the years. One special event class will be Re Funk My Junk: turning your passion into a business flipping furniture.

Be an Early-Bird

Renew your 2019 membership between July 18 - August 31 to receive 3 FREE ePackets.



SDP Membership Renewal: Be An Early Bird

Renew your membership between July 18 and August 31 and received three free e-packets. If you don't have a computer or can't print e-packets, the SDP office will send your name to me with permission to print a packet for you. The designs are a Funky Chicken by Linda Sharp CDA, an easy forget-me-nots design by Marlene Fudge and an elegant colored pencil iris by Marian Jackson MDA.

Help SDP unpack all of the boxes that they have brought back from the Atlanta Decorative Painting Museum! For every \$100.00 in donations we receive each week, we will open 1 box on Facebook Live on our Society of Decorative Painters Facebook page. Tune in every Friday at 11am central to see the treasures as they unbox that day. You can see past Friday unboxings any time.

If you would painlessly like to donate to SDP (or another other favorite charity) take advantage of SMILE Amazon. The price you pay is the same as regular Amazon but Amazon will donate to a charitable organization. If you don't already, please use Smile Amazon and choose to support Society of Decorative Painters Foundation Inc. in Wichita KS. If everyone would, it would really add up. Donna Frost

WMDPG General Meeting Minutes - Sunday, May 6th

The meeting was brought to order at 10 AM by President D. Frost, at the Country Inn in Bedford, NH, followed by the Pledge of Allegiance. Nancy Miller was welcomed as a new member and Janelle Laylagian as a guest.

Tolegate – L. Kelly. Money was collected from members who did not have their name tags. The money generated goes to charity.

Membership - J. Seastedt. The current membership is 44, plus 3 Lifetime members. 25 members attended the meeting. Lunch was served for 20 and 15 enjoyed the afternoon program painting project.

Treasurer- C. Beers-Witherell. Finances are up to date and are balanced.

Secretary – M. Moses. The report of the last meeting was printed in the newsletter. A correction was given by K. Lafayette. Ornaments that will be painted by members will be given to volunteers at NET. The report will be filed as corrected.

Newsletter – C. Swasey. Information was given to the members about some changes in the newsletter in order to decrease the cost of producing. New formats are being investigated. August 4 is the deadline for the next newsletter reports and interesting contributions from members.

Memory boxes – J. Seastedt and M. Moses. New boxes have arrived and members are encouraged to take one home to paint. The supply of painted boxes is low at this time as several have recently been taken to 2 hospitals. The Nashua hospital especially was thankful for our donations as they were about to purchase some. Thanks again to K. Tanguay for bringing 2 boxes to the meeting.

Secret Pal – P. Daly is now in charge of the Secret Pal program. Be sure to sign up next year for this fun project.

Vice President - S. Hodgkins. A form had been given to members recently to fill out in order to obtain opinions on the type of afternoon programs, workshops, and seminars that they would like to see planned for the future. This has given the board some ideas on the media, teachers, and the time of the year to plan. The afternoon program for the meeting was painting a pretty, white plant pot with K. Lafayette. She designed the pattern for this meeting. On September 9, the afternoon program will be a trunk show with “Wood Items and More”, a craft supply store from Rhode Island. They will be bringing patterns and surfaces available for purchase. Members will be painting snowmen ornaments, one for “Project Rudolf” and one to keep. “Project Rudolf” is a program which sends ornaments to service members abroad. Painters are encouraged to participate in the November ornament swap and this would be a great time to paint ornaments for David’s House. At the November meeting, the afternoon program will be painting a cardinal on cardstock and mounting it under glass. S. Hodgkins will be teaching the interesting project.

Workshops – S. Franklin will be teaching a colored pencil Goldfinch at her home in Wells, Maine on June 24. C. Harrison has offered to teach an apple tree project in August – the date to be announced. The recent workshop with Janice Cormier and Rosemary Barrett was wonderful. Thanks were given to C. Harrison for hosting the teachers.

Seminars are being planned for 2019 with teachers Rosemary West and Arlene Linton. Yankee Painting Guild will be holding a seminar with Shara Reiner on July 1st and WM members are welcome to sign up. C. Swasey requested that members who have neither email nor a smart phone contact her in order for them to receive additional information on painting workshops and seminars being held by local chapters.

Chapter Energizer - K. Lafayette asked members to decide if they wish to continue with the “egg swap” held at the March meeting as there were only 10 participations this year. The decision was made to continue with the swap.

NET News – K. Lafayette. She reminded members that volunteers are needed for the WM chapter’s assignment to store teachers’ supplies and for room set up and clean up. Please contact her to tell them the days and times you can volunteer. Do your part in helping the convention continue each year! We will be painting pins for the volunteers. L. Provencher is chairing the Yankee Heritage Guild’s assignment in the display room and asked that anyone with time to spare consider helping him.

Hospitality – L. Kelly. A card will be sent to J. Bognore who suffered a heart attack in 2017. She is recovering but needs encouragement to paint again.

(Continued on next page)——

WMDPG General Meeting Minutes continued - Sunday, May 6th

Annual Fundraiser Raffle 2018 – S. Mangano. J. Tomlin is painting a beautiful Betty Caithness” pattern for the raffle. It is pictured in the newsletter. Encourage friends and family to purchase tickets. M. Rowe and P. Daly were the winners for the day’s ticket purchases.

Annual Fundraiser Raffle 2019 – C. Swasey. The individual painted quilt block should be done by June of this year in order to have time for the quilting.

NEW BUSINESS—C. Harrison – Recording secretary for SDP. She reminded members that the SDP annual meeting is on Thursday, May 10 and will be live streamed to the SDP Facebook page, “SDP: Artful Connection”. SDP members must join the Facebook page prior to the meeting. The society wants the members to know that they are listening. Members want to be able to vote on amendments and there is now a By-Law change which incorporates voting via computer. Monthly newsletters called Chapter Chatter are being sent to the Chapter Presidents and will include tips, tricks, projects and ideas on how to gain and retain members. Cindy has agreed to be the Social Media Committee Chair, so stay tuned for more information on that.

D. Frost - A lengthy discussion was held as to whether voting on a change to the amount of dues was necessary. A quorum of 10 people (20% of current membership) was necessary. With 25 members present, a quorum was declared. A two-thirds majority of 17 was required to pass the change to the standing rule for dues. The existing standing rule is \$20 for chapter dues and a vote changing it to \$15. was passed.

Palette Potpourri – L. Kelly. The prize for the day was won by S. Mangano. She explained her pretty watercolor grape painting to the members.

Centerpieces – K. Lafayette. The 4th of July Americana centerpieces were produced by C. Harrison and D. Fortin with assistance from N. Schlis. A game was held to decide who the lucky members were to take them home. C. Beers-Withersll and S. Cochis volunteered to supply the centerpieces for September and P. Brown for November

Bag Raffle – S. Mangano. The raffle was held for the winners of the bags brought in for the meeting.

The meeting was adjourned, after which a lunch of sandwich rolls, salads and desserts was enjoyed thanks to our chef, L. Conners, and her assistants. An enjoyable afternoon was spent painting the pretty pots with K. Lafayette.

Yours truly,
Marilyn Moses,

2019 ELECTIONS for WMDPG OFFICERS and EXECUTIVE BOARD MEMBERS

Our Guild exists because of the dedication of its Officers and Board Members who volunteer their time to perform the necessary duties to keep WMDPG alive. We exist to advance artistic knowledge, share our art form and to make and keep friendships alive. We all enjoy the perks of membership, but without Officers and Board members, it will all go away.

Please consider stepping up and making the 2019 slate of Officers and Board Members the best ever. Needed for 2019 are candidates for:

Vice President/President Elect
Newsletter Chair
Membership Secretary
Financial Secretary
Treasurer
Board Members At Large (3)

These jobs require work and dedication, but the rewards are great.

Please consider running for an Office. All current and past Officers are willing to help anyone who wants to keep the Guild going.

I will try to get in touch with as many members as I can to ask about running for office. Please think about how your skills can make the Guild the best ever.

Thanks,

Kris Lafayette, Nominating Chair

Directions...

Directions to: Country Inn & Suites So. River Road, Bedford

From points North, take Rte 3 South/Everett Turnpike, take Bedford Exit. Take a right on Rte 3 and follow this south until you pass IHOP & Bugaboo Creek, go over the highway, and the hotel is on the hill on the right.

From points South, take Rte 3 North/Everett Turnpike, get off at the Airport exit before the toll booth, Rte 3 Merrimack. Go North on old Rte 3 toward Bedford. The hotel is 2 miles on the left. Get into the left lane just after the set of lights (junction of Animal Hospital/Neurospine Center/Hampton Inn).

From points East, take Rte 101 West/293, get off at the Bedford Exit bringing you to South River Road/Rte 3. Take a Right and follow that until you pass IHOP & Bugaboo Creek, go over the highway and the hotel is on the right on the hill.

2018 WMDPG Officers & Board of Directors...



President	Donna Frost	603-648-2386	president@wmdpgnh.org
1st Vice President	Sue Hodgkins	603-225-9074	vp@wmdpgnh.org
Newsletter Editor	Carolyn Swasey	603-490-4429	editor@wmdpgnh.org
Secretary	Marilyn Moses	603-382-5284	esmjmoses@comcast.net
Treasurer	Carol Beers-Witherell	617 966 1557	caprice18@aol.com
Membership Sec	Jacque Seastedt	603-642-5156	join@wmdpgnh.org
Past Pres. Advisor	Carol Howard	603-888-8182	

Board Members	Linda Connors	603-344-4534	lindaconnors@gmail.com
	Melanie Knox	603-529-7129	mek5@gsinet.net
	Dotty Pullo	603-864-0206	rosedpullo@gmail.com
Alternate:	Peg Daly	603-456-2036	peggy114@tds.net

2018 Presidential Appointments...

2018 Calendar of Events...

January 14, 2018	General Meeting
January 28, 2018	Newsletter Deadline
February 3, 2018	Board Meeting
March 11, 2018	General Meeting
April 7, 2018	Newsletter Deadline
April 7, 2018	Board Meeting
May 6, 2018	General Meeting
May 8-12, 2018	SDP Nat'l Conference
August 4, 2018	Newsletter Deadline
August 4, 2018	Board Meeting
August 7, 2018	HOOT Convention
September 9, 2018	General Meeting
October 2-7, 2018	NET Convention
October 13, 2018	Newsletter Deadline
October 13, 2018	Board Meeting
November 11, 2018	General Meeting
December 15, 2018	Board Meeting
December 15, 2018	Newsletter Deadline
January 13, 2019	General Meeting

The **deadline** for the next issue of
Tole it to the Mountains is
October 13, 2018

Centerpiece	Kris Lafayette9	978-667-5709
Egg & Ornament	Kris Lafayette	978-667-5709
Annual Raffle	Susan Mangano	603-437-3437
Historian	OPEN	
Hospitality	Leeanne Kelly	603-689-8700
Installation Coordinator	OPEN	
Memory Box Program	Marilyn Moses	603-382-5284
	Jackie Seastedt	603-642-5156
Mercantile	SUSPENDED	
NECC/NET Reps	Larry Provencher	603-772-2522
	Carol Howard	603-888-8182
NET Volunteer Chairs	Kris Lafayette	978-667-5709
	Anne Wifholm	603-345-3462
Nominating Committee	Kris Lafayette	978-667-5709
Paint-Ins	SUSPENDED	
Parliamentarian	Kris Lafayette	978-667-5709
Raffle Coordinator	Sue Mangano	603-437-3437
Secret Pals	Peggy Daly	603-456-2036
Service Project/Charity	Linda Connors6	603-344-4534
Seminars	Sue Hodgkins	603-225-4534
Workshops	Sue Hodgkins	603-225-4534
Chapter Energizer	Kris Lafayette	978-667-5709
Luncheon Chair	Linda Connors	603-344-4534
Website	Donna Frost	603-648-2385

2018 New England Chapters Council...

NECC President	Kris Beckman	newtkris@aol.com
NECC Vice President	Eileen "Rocky" Rockwell	
Secretary NECC/NET	Dorey Joy	djoy@nycap.rr.com
NECC Treasurer	Cheryl Barb	cherab@comcast.net
NECC Advisor	Regina Brown	southgatebrown@gmail.com
NET Chair	Robin Prout	robinprout@yahoo.com

NECC/NET Meetings are open-door meetings. We ask that if you plan on attending to let Kris Beckman, NECC President(newtkris@aol.com) know, so seating is adequate for everyone. Please contact Kris directly regarding scheduled meeting dates. Thank you!

Painters tip.— Have you ever had problems removing graphite pencil lines? There may be an option: an artist posted a potential solution on Facebook and I thought it was an idea worth sharing. When drawing lines on your piece, she recommended you use Watercolor pencils. Choose a Watercolor that closely matches the paint color you are using.
Carolyn

WMDPG General Meeting...

Date: September 9, 2018
Place: Country Inn & Suites, So. River Road, Bedford

Directions: See page 4

9:00-10:00 The Tables: Palette Potpourri, Chapter Chatter, Coffee, Tea and Ice Water (Compliments of the Chapter) Boards (upcoming events), Goodie Bag Raffle

10:00-12:00 Business Meeting

12:00-12:30 **Lunch**—Soups, salads and a desert buffet.

12:30-4:00 **Painting with Cindy Harrison**—A heart shaped frame with an apple orchard scene

Things to Bring to the Meeting

- A Friend or Guest
- Something for Palette Potpourri
- Your painted name tag
- Money for raffles & Fundraiser tickets
- Memory Boxes UNFINISHED/FINISHED/
- Item for David's House
- Brown Bag Goodies
- Your Smile and An Open Heart
- **AFTERNOON PROGRAM SUPPLIES:**

Paints – DecoArt Americana

Asphaltum DA180	Plantation Pine DA113
Grey Storm DA328	Desert Sand DA077
Scarlet DA	Moon Yellow DA07
Blue Haven DA318	Snow White DA01
Hauser Medium Green DA132	Santa Red DA170
Slate Grey DA68	Foliage Green DA269
Deep Burgundy DA128	Lamp Black DA067

Bring a 2" chip brush, Deerfoot Stippler and regular flats, rounds, liners, mops, scissors, glue

September 9, 2018 General Meeting Afternoon Program Registration Form—

Name: _____ Phone: _____
 Guest: _____ Email: _____

Please indicate the following:

	<i>Pre-registered</i>	<i>Guest</i>
Business Meeting	Yes / No	Yes / No
Afternoon Project /surface, paints, photo & instructions	Yes \$12/ No	Yes \$12/ No
Lunch – Soups , Salads and deserts	Yes \$10/No	Yes \$10/ No

Make checks payable to: **WMDPG**

Total Enclosed: _____

Mail to: Jacque Seastedt
 49 Sandown Road
 Danville, NH 03819
 603-642-5156

Email: jjoin@wmdpgnh.org

A heart shaped frame with an apple orchard scene



2018 WMDPG Afternoon Programs, Workshops and Seminar Projects

We have a lot of wonderful projects, workshops and seminars planned for 2018. Watch this space for more pictures as the year unfolds and the new year begins. You don't want to miss out on any of these opportunities.

Upcoming Afternoon Programs, Workshops & Seminar information

November 11, 2018: Sue Hodgkins project is a bird painted on cardstock and then mount under glass.
Fun new techniques!



January 2019: Chalk painting with Donna Frost. Inspired by Judy Westgard's Chalk It Up book, we're thinking of a favorite saying on a medium size plaque.

Workshops -

- **September 15, 2018:** Cancelled
-

Seminar-

January 19 or 20, 2019—Arlene Linton returns. More information to come.

Jacque's Recipe Corner...

Texas Sheet Cake

2 c. flour
2 c. sugar
1 c. butter (2 sticks)
1/3 c. cocoa (dry)
1 c. water
2 eggs
1 tsp. baking soda
1 tsp. cinnamon (optional)
1/2 c. buttermilk
1 tsp. vanilla

Stir flour and sugar in large mixer bowl.

In saucepan, melt 2 sticks butter. Add 1/3 c. cocoa and blend. Add the water and bring to a rolling boil. Remove from heat. Mix the chocolate mixture into the flour mixture and beat well.

In small bowl, beat together the eggs, baking soda, cinnamon, buttermilk and vanilla. Add this egg mixture to chocolate/flour mixture and beat well. Pour into lightly greased 10x15" pan. Bake in preheated 375* oven for 20 minutes or until cake tests done.

While cake is baking, prepare frosting:

1/2 c. butter (1 stick)
1/3 c. cocoa (dry)
6 tablespoons milk
1 lb. (3 1/2 c.) powdered sugar
1 tsp vanilla
3/4 c. chopped nuts

Melt butter in saucepan, add cocoa to melted butter.

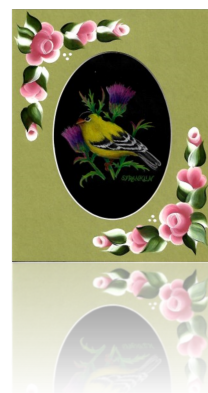
Blend in 6 tablespoons milk. When it comes to a boil, add powdered sugar, beating till smooth. Add vanilla. Spread frosting on cake when cake comes out of oven and is still hot. Sprinkle nuts on top. Cool before cutting into squares.

This recipe is great when you need a lot of servings, keeps well, and freezes well.
Enjoy!

Suzi Franklin's June 24th Goldfinch colored pencil workshop was a success



Thank you Suzi for hosting this event and opening up your home. What a surprise—a bonus project. Everyone looks extremely happy



NET—Mark Your Calendar...

New England Traditions: October 2 -7, 2018

<http://www.newenglandtraditions.org/>

Printed catalogs can be ordered from Amazon.com (search for ISBN 978-1986762915 or provide the link, below). The cost is \$8.00.

https://www.amazon.com/dp/1986762912/ref=sr_1_1?ie=UTF8&qid=1522263592&sr=8-1&keywords=9781986762915

NECC/NET Share—

Want some really good news about NET? Well..... we just hit 300 registered attendees for 2018 and last year on July 19 we had 237!!!!!!

Best of all, we couldn't have done it without your support and everyone's efforts to make NET happen. WE DID IT!!!!!! Spread the word!!!!

WMDPG is responsible for staffing the Volunteer Room at the NET Convention this year. If you can volunteer, please contact Kris Lafayette. Her email address is: kwlaf1@verizon.net. Please think about volunteering; we have to cover 63 hours.

A big THANKS to everyone who has already offered to cover some portion of time in the NET Volunteer Room. The Volunteer Station is the WMDPG's job for NET 2018. The room needs to be staffed from 7 AM to 10 PM on Wednesday, Thursday, and Friday, October 3, 4, and 5. As well as Saturday October 6, from 7 AM to 8 PM and Sunday October 7, from 7 AM to 12 NOON.

We are responsible for making sure that the classrooms are clean at the end of the painting sessions and that they are ready for the next day's classes. We would like to ask all members to help us out by tidying up the classroom as they leave it. It will help us all. Also we need coverage as the Volunteer Room is the storage area for each scheduled classes supplies. AND Anne and Kris would like to take a class or two!

There will be special hand painted pins for the volunteers, daily door prizes, and there will always be a basket of CANDY available to anyone who stops by, even if it is just to visit and say Hi!

Thank you all.

VOLUNTEER ROOM 2018 New England Traditions

Sister Chapter Events... Capitolers and Yankee



Maxine Thomas
Acrylic Seminar
November 2, 3, 2018 9:00 a.m. - 4:30 p.m.
at the
Cornell Cooperative Extension
24 Martin Road
Yonkersville, NY 12186

Name: _____
Address: _____
Phone/E-mail: _____

If you are interested in this wonderful seminar, a \$65 deposit will hold a spot. Please check each day you would like to attend. At always, you may use the surface of your choice.

_____ Friday - Christmas Candy Dish/Tree Skirt/Ornaments
_____ Saturday - Bountiful Harvest

More information will follow on ordering surfaces.

Registration until June 30, 2018 (Members Only):
Register for one or both days - Class fee per day is \$65.00

Registration after June 30, 2018
Members Class fee - Friday \$65.00 Saturday \$65.00
Non-Members Class fee - Friday \$70.00 Saturday \$70.00
For questions contact Sylvia at sylvia@newenglandtraditions.net or 518-765-4438

Send your check payable to Capitolers - Mail to: Sylvia Tilton
3 Pondview Dr.
Yonkersville, NY 12186

Yankee Heritage Tole Chapter
Presents an Afternoon Program with Janice Cormier
Sept. 16, 2018

Time & Place: 1:00 to 5:00 p.m. at Knights of Columbus, 17 Willow Street, Westborough, MA 01581.

We will be painting this colorful rooster with Janice. The painting measures 7 x 9 and can be painted on your surface of choice. It is a mixed media project.

Regular painting supplies are required and bring your own lunch.



Keep the top portion of this form

Afternoon Program with Janice Cormier
(Please register before Sept. 6, 2018)

Please return this form if you plan to attend the meeting whether or not you plan on painting.

Name: _____ E-mail: _____
Address: _____
Phone: _____

Sunday, Sept. 16, 2018
I _____ will not attend the General Meeting at 10:00 am.
I _____ will not attend the afternoon program with Janice Cormier.
No. of Guests attending the meeting - note the name(s) of your guest(s) on the back of this sheet.
I am enclosing \$10.00 for each person attending the afternoon program \$ _____

Yankee Heritage Tole Chapter
Seminar with Shara Reiner
Friday March 15 and Saturday March 16, 2019

Time & Place: 9:00 to 5:00 p.m. at Knights of Columbus, 17 Willow Street, Westborough, MA 01581.

Friday we will be painting the pitcher. The pitcher is available from Delta and Co. Product Number FT-0945. Price is \$48 plus shipping.

Saturday the project is a small bench 9in. square and 10in. tall available from Painters Paradise #120500. Price is \$14 plus shipping. You may use any surface you want. I will have the line drawing and prep in the summer and will send it to you at that time.

Regular painting supplies will be needed and bring your own lunch. Seats will be assigned when you sign-up. Yankee members have first chance before we open it up to other painters. We will be accepting other painters as of July 1. There are a limited amount of seats available.

If you have any questions, please contact Barbara Kalla: 1-413-967-5444 email brobka@comcast.net



Keep the top portion of this form

The cost of the seminar is \$75 for one day or both days for \$130 paid in full.

Friday March 15 _____ \$75. Pitcher
Sat. March 16 _____ \$75. Stool
Both days _____ \$130.

Name: _____ E-mail: _____
Address: _____ Phone: _____

The Brown Bag Raffle..



Clean out your unwanted treasures and bring them to our White Mountain Guild meetings to raffle off! You may place them in boxes, brown or plastic shopping bags, whatever works for you...will work for the Guild. What a great way to evaluate your supplies, make room for new ones and earn money for our guild all at the same time. Treasures may include surfaces, books, patterns, painted items, paint and so much more.

General Meeting Raffle Rules

- Raffle held at general meetings
- Members will bring bagged or boxed items to be raffled in new or like new condition
- Painting supplies, surfaces, paint, mediums, books, magazines, useful items
- Painted items
- Tickets will be sold at that general meeting
- Drawing for these items will be at the same general meeting

Meeting/Event Cancellation Policy...

Cancellations for any WMDPG Event/Meeting will be posted on our website and/or Facebook page: www.wmdpgh.org

<https://www.facebook.com/White-Mountain-Decorative-Painters-Guild-357770294262956/>

no later than 8:30 am on the day of that activity. If you do not have access to the internet, please call a friend who does or call any Board Member. (See Page 2 for phone numbers.)

Policy—for Missed Events Project Pieces...

If an individual paid for a class and is unable to attend, arrangements must be made to obtain the materials within 2 months or by the next General Meeting. Otherwise, the class project will revert back to the Guild with no refund.

David's House Wish List...

Paper towels
Tissues
Paper plates & bowls
Plastic utensils
Paper cups - 5 oz. only
Laundry detergent - powder
Kitchen sponges
Dishwashing liquid
Liquid hand soap
Dryer Sheets
Stain Removers
Juice boxes, Concentrated juices
Cookies and crackers
Cereal Bars
Cereal - single serving and regular
Pop tarts
Fruit snacks
Applesauce
Pudding Snack cups
Microwave Popcorn
Single serving microwave meals
Soups (small size)
Beef stew (small size)
Coffee creamer (powder)
Spaghettios/Ravioli (reg. size)
Sanitary napkins
Tampons
Panty shields
Nursing pads (disposable)
New DVD's (family appropriate)
Wii Games (teen rated or lower)
-don't worry about duplicates!
Postage Stamps

**Gift Cards are always
appreciated:**

Phone Cards
Lebanon Co-Op
Wal-Mart

BJ's
Shaw's Supermarket
Best Buy
Home Depot
K-Mart
Hannaford's Supermarket
Irving

New Items Only Please



Birthday wishes...

August– Cindy Harrison (3), Carolyn Swasey (5), Susan Mangano (11), Deb Hagman (13), Carol Beers Witherell (22), Marilyn Ford (26) and Debbie Fortin (30),

September - Shirley Day (7), Donna Wood (9), Donna McInnes (13), Laurie Keene (14), Margie Rowe (25), Anne Wifholm (27), Leanne Kelly (27) and Fran Haas (30).

October - Janice Tomlinson (10)

November - Elizabeth Vitale (9), Peggy Daly (13), and Linda Evans (19).
Hope you're enjoying your summer.

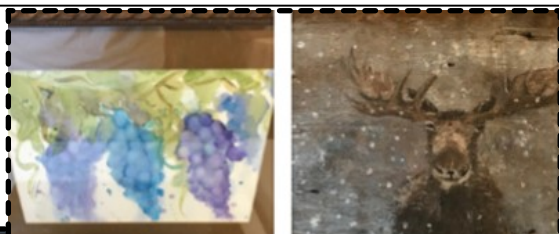
Thank you Kris for teaching the May 2018

Thank you Kris for teaching the May afternoon program.



Newsletter Palette Potpourri...

Members sharing what they have painted. Does this motivate you to bring in a piece to share at our next meeting. SURE HOPE SO!



Only a sampling of the pieces on the table, please keep sharing. This offers great motivation to others to keep painting.

SDP Member Discounts...

Patterns/Supplies: Art Factory, Cupboard Distributing, Erika Joanne Designs, Just Fine Designs, Kingslan & Gibilisco Decorative Arts, Scottie's Bavarian Folk Art, Turn of the Century Wood Products, Viking Woodcrafts

Supplies: B&B Etching Products, Inc., Earmark Decorative Painting Studio, Jo-Ann Fabric's and Crafts stores

Surfaces: Homestead Design (Gourds), Porcelain Treasures of Ohio

Online Painting Opportunities: Art Apprentice Online, Interactive Artist Magazine

"Giving Back to WMDPG"...

The teachers listed below will give 5% of your total to WMDPG when you purchase items from their website. You must tell them you are with WMDPG at the time of your order.

Rebecca Baer - rebeccabaer.com.
Cindy's Decorative Painting - www.cdpnh.com

WMDPG Painters' Attic Sale ...

As started in 2014 meeting, WMDPG would like to continue to extend an invitation to it's members to sell their goods (painting related) at our meetings. It was decided that two members would be able to 'rent' a table at each meeting. If you are interested, please contact me. One painter's stash is another painter's treasure!!! **We have a collector of painting items. (Ginny Dandreta) who will be selling her treasures at our September 9th guild meeting.**
Donna Frost, President

Website Updates...

<https://wmdpgnh.org/>
The Guild's website is up and continues to be updated by Cindy Harrison and her son Alex. Please be patient as they continue to work on improving our site.

Advertising Rates ...

Ad copy and checks should be sent to:
Carolyn Swasey
10 Berkshire Ln
Londonderry, NH 03053

Any Questions? Email Carolyn
at :Wmdpgcarolyn@outlook.com or call
603-490-4429

	MEMBER		NON-MEMBERS	
	1 Issue	5 Issues	1 Issue	5 Issues
Full Page	\$30.00	\$135.00	\$40.00	\$180.00
Half Page	\$15.00	\$67.50	\$20.00	\$90.00
1/4 Page	\$7.50	\$33.75	\$10.00	\$45.00
Business Card 3.5X2"	\$5.00	\$22.50	\$7.50	\$33.75
Little Notices Bulletin Board	\$1.00	N/A	N/A	N/A

****Submission deadline October 13, 2018****

Volunteer Corner

**We are only as
GOOD as our
Volunteers...**

May Centerpieces...

Thank you to Anne Wifholm for her expertise crafting the May centerpieces. They were adorable. Thank you in advance to Carol Beers-Witherell and (mom) Shirley Cochis for painting the September Centerpieces, I cannot wait to see what they will be like. Also Paula Brown has volunteered to paint the November meeting's centerpieces. Thank you all my friends...Kris



Looking for a volunteer to paint the January Centerpieces...

Volunteer Opportunity

January 2019 is open to anyone who would like to paint centerpieces for our meeting. I have LOTS of wood SNOW PEOPLE available if anyone is interested in crafting a SNOWFAMILY EXTRAVAGANZA in January. Call Kris ... (978 667 5709)

Brown Bag Auction...



Think about bringing in paint related STASH items for our Brown Bag Auction. The proceeds benefit David's House. You may be surprised on what you find inside.

2019 Raffle update. The blocks are painted and they look beautiful.

Thank you to the 12 ladies who volunteered to paint one. Hats off to Suzi, as well, for agreeing to paint the Tuffet triangles. The unveiling will happen at the January 2019 meeting .

Year-To-Date Financial Report

1/1/2018 through 7/24/2018

Category	1/1/2018 - 7/24/2018	Overall Total
INCOME		
Afternoon Program	\$255.00	\$255.00
Charity Inc.	\$28.00	\$28.00
General Meeting	\$1,000.00	\$1,000.00
Lunches	\$450.00	\$450.00
Membership Dues 2018	\$240.00	\$240.00
NET Dividend	\$750.00	\$750.00
Seminar	\$940.00	\$940.00
Ways & Means	\$238.01	\$238.01
Workshop	\$280.00	\$280.00
TOTAL INCOME	\$4,181.01	\$4,181.01

EXPENSES		
Afternoon Program	\$160.00	\$160.00
Chapter Insurance	\$66.00	\$66.00
General Meeting	\$40.00	\$40.00
Hospitality	\$10.00	\$10.00
Lunch	\$89.82	\$89.82
NECC Dues 2017	\$250.00	\$250.00
Printing & Reproduction	\$105.91	\$105.91
Rent	\$490.50	\$490.50
SDP Chapter Dues	\$39.70	\$39.70
Seminar	\$847.88	\$847.88
Website Hosting	\$68.17	\$68.17
Workshop	\$528.17	\$528.17
TOTAL EXPENSES	\$2,696.15	\$2,696.15

OVERALL TOTAL \$1,484.86 \$1,484.86

Account Balances - As of 6/30/2018

Bank Account	Balance
Money Market	\$0.00
WMDPG Checking	\$5,134.63
WMDPG CD	\$7,096.65
TOTAL BANK ACCOUNTS	\$12,231.28

Shout out of gratitude to the 2019 Raffle Volunteers: Paula Brown, Susan Mangano, Sue Duffy, Peggy Daly, Linda Connors, Doty Pullo, Mae Snell, Melanie Cox, Carol Bell, Cindy Harrison, Fran Gelinas and Debbie Fortin and Suzi Frankin..



WMDPG January-May 4, 2018

WMDPG		Proposed Budget 2018	
Income	Calculation assumption	to date	proposed
Newsletter advertising	members may advertise for sale items	0	25.00
Ways and means	moneys collected from bag sales/raffles	462.00	500.00
Membership dues	45 @ \$10.00 some members are exempt	320.00	400.00
Workshops	\$25.00 x 10 people x 4 workshops	534.00	1000.00
Charity	based on 2017 Tollgate collected	101.00	120.00
CD Interest	based on this years interest	25.00	25.00
Seminar Income	based on Lynne Andrews 2 day seminar	2580.00	2500.00
NET Dividends	based on 2017 dividend	500.00	500.00
Afternoon Program	\$10.00 x 18 x 5 meetings	710.00	900.00
Lunches	based on continued lunch profits	621.00	700.00
Total Income		5853.00	6670.00
Expense/Disbursements			
Charity	based on gift of \$250 yr to Davids House	250.00	250.00
Memory boxes	based on this yrs expense	50.00	50.00
Hospitality	no receipts as of yet [new members gifts]	0	25.00
VP trip to Nationals	yearly, not yet disbursed	1000.00	1000.00
Office	printing/postage	58.00	75.00
Newsletter	5 times yearly	156.00	175.00
SDP Insurance	liability insurance	100.00	100.00
SDP dues	yearly	93.00	93.00
NET dues	yearly	40.00	40.00
Website	yearly	40.00	40.00
Afternoon Program	includes teachers fee	630.00	750.00
Rents	5 meetings [expected increase]	1215.00	1250.00
Seminar	Lynne Andrews	2316.00	2500.00
Workshops	in home to date	287.00	400.00
Lunches	based on current lunch expenses	151.00	175.00
Total Expenses		6386.00	6923.00
deficit expected \$253.00			
Profits this year to date			
Workshops	\$250.00		
Lunches	\$450.00		
Seminar	\$165.00		
Afternoon Program	\$ 80.00		
Respectfully submitted , Treasurer, Carol Beers Witherell			

DecoArt® Media Fluid Acrylics™: Premium semi-gloss acrylics formulated with lightfast and artist-grade pigments so that pours will display rich, intense colors. Since they possess such high-quality pigments, the 8-oz. size is ideal for paint pouring: a little goes a long way.



2018 Deco Art Media Fluid Acrylics

SDP Membership Change...



SDP Dues. The Society is changing the anniversary date of your membership year. Members will still receive four issues per year, but the first issue you receive will be based on when you join. For example, if someone joins in September, that's their anniversary month and their membership starts then. Previously, if someone joined in September, they had to pay dues for the entire year and renew again by December 1st. This change will make things easier for the SDP since they will no longer have to send out back issues for the calendar year.

Please! Print as many as you like, then print some more!

Sell them to your friends and family. Teachers, bring them to your studio and sell to your students.

Fundraising Chair: Susan Mangano 603-437-3437 paintatheart@yahoo.com

We look forward to having pictures of the raffle items soon! Watch for updates!!



Drawing is at the January 2019 meeting

Thank You!

WMDPG
2018

WMDPG
2018

\$1.00 Each or 6 for \$5.00

ENTER TO WIN!

Name: _____

Address: _____

Phone: _____



Drawing is at the January 2019 meeting

Thank You!

WMDPG
2018

WMDPG
2018

\$1.00 Each or 6 for \$5.00

ENTER TO WIN!

Name: _____

Address: _____

Phone: _____



Drawing is at the January 2019 meeting.

Thank You!

WMDPG
2018

WMDPG
2018

\$1.00 Each or 6 for \$5.00

ENTER TO WIN!

Name: _____

Address: _____

Phone: _____



Drawing is at the January 2019 meeting.

Thank You!

WMDPG
2018

WMDPG
2018

\$1.00 Each or 6 for \$5.00

ENTER TO WIN!

Name: _____

Address: _____

Phone: _____

2018 Membership Application — **Society of Decorative Painters**

Name: _____
Last First Year Joined

Address: _____

City _____ State _____ 9 Digit Zip Code _____

Phone () _____ ☐ Check box if this is a new address

New ☐ Renewal ☐ Membership# _____

Chapter Affiliations: _____

E-Mail Address _____ Website: _____

- ☐ INDIVIDUAL MEMBERSHIP (US only): **\$60**
- ☐ INDIVIDUAL/BUSINESS ASSOCIATE: **\$90**
- ☐ HOUSEHOLD MEMBERSHIP **\$40** (for immediate family member sharing same address)
- ☐ TRIAL MEMBERSHIP **\$40** (for new members who want an on-line copy only of the Decorative Painters)
- ☐ STUDENT MEMBERSHIP **\$20** (online magazine only) (documentation must be provided)

Check Enclosed (payable to SDP) or CHARGE my: ☐ Visa ☐ MC

Card No.: _____ Exp. Date: _____

Total \$ _____

Date: _____ Signature: _____

Mail form and payment directly to:

SDP
1220 East First Street
Wichita KS 67124
or:

Join online at:

<https://www.decorativepainters.org>

2019 Membership Application — **White Mountain Decorative Painters' Guild**

You must be a current member of the SDP to be a member of WMDPG.

Name: _____
Last First Year Joined

Address: _____

City _____ State _____ 9 Digit Zip Code _____ Check box if this is a new address: ☐

Phone () _____ E-Mail Address _____

SDP Membership # _____

New Member \$15.00 ☐ Renewal \$15.00 ☐

☐ **Newsletter Hardcopy add \$10/year (optional)**

☐ **I do not have a computer! Mail for Free!**

☐ Do not list email / phone to Membership

Let Us Wish You Happy Birthday: MM _____ DD _____

Shop Owner ☐ Teacher ☐ Student ☐

Would you be a teacher at a meeting or a workshop? Yes ___ No ___

Medium Taught _____

Would you be willing to be contacted for rides? Yes ___ No ___

Today's Date: _____

Referred By: _____

**Please send form and payment
(check made payable to WMDPG), to:**

Jacque Seastedt
49 Sandown Road
Danville, NH 03819
603-642-5156

Email: jseastedt@comcast.net
or join@wmdpgnh.org

Questions? Call Jacque Seastedt , 603-642-5156 or email at: join@wmdpgnh.org