



## Tole It To The Mountains

www.wmdpgh.org

The Official Newsletter of the White Mountain Decorative Painters' Guild  
An Affiliated Chapter of the Society of Decorative Painters

### Sue's Presidential Scribbles...

- I hope you are all enjoying this wonderful summer. Soon we will all be meeting again for some exciting painting opportunities, but I want to mention some great "painting" times we've already had this summer. In June several of us met at Suzi Franklin's for a color pencil barred owl workshop. We had a great time and good laughs although it did get a bit chilly with that cool ocean breeze! Tough life! Everyone either completed the piece or nearly completed it with Suzi's expertise. After class some of us went to an awesome seafood restaurant for scrumptious lobster rolls or fried food. It was yummy as usual, and we again had the opportunity to be with others who "get us". Not all of our friends or family understand our desire for one more wood piece, bottle of paint, specialty brush, pattern, or gadget.
- In July we had a workshop taught by Janice Tomlin. Again, we almost or completely finished the Prudy Vannier Christmas Elf piece. Janice has a great studio and just by being in it for a day, I came away so inspired. She shared great tips and ideas throughout the day and had extra Prudy patterns in magazines that we could leaf through and buy. She was also very generous and gave us lots of little extras. We all walked away feeling like we had just gone to a Christmas party with the gifts we took home!
- I hope that some of us will bring our workshop pieces for the Potpourri table for all to see. Thank you, Suzi and Janice, for your hospitality and teaching skills to make these workshops as great as they were.
- I also hope that all of you get the chance to go to some of our upcoming seminars and workshops to experience the fellowship I did. I have found that during our business meetings we can have a good time, but it's at the times that we sit down to paint together that we bond our relationships and make new friends. Those are the best of times!
- Enjoy the rest of the summer and happy painting!
- Sue

WMDPG – the deadline for the next issue of 'Tole it in the Mountains' is  
October 5, 2019.

### News from our Vice President...

As I am writing this, I feel an autumn breeze. Autumn is my favorite time of year! It brings to us painters wonderful opportunities at White Mountain and at NET.

On September 8<sup>th</sup>, we will have an afternoon program featuring Janice Tomlin. She will instruct us in the use of colored pencils to create a beautiful holly and berry design on a black background. This could be framed or copied to make your own Christmas cards! The following weekend we welcome Rosemary West from Texas. I hope you have seen her heart box and tray design. There is still time to contact Dotty Pullo if you can join us. This seminar will be held in Londonderry, NH.

Finally, please review our calendar to see upcoming events and meetings. Cynthia Erikson, Lynne Andrews, and Paulette Di Gesare have agreed to instruct seminars in 2020. Please save the dates! Your attendance is our thanks for planning programs. I hope to see you soon.

Happy painting,  
Peggy Daly

### NET Volunteer Opportunities...

#### Please bring your calendar of NET classes to the meeting.

We still need volunteers to help with our WMDPG job, class sales, and registration. We have many of the times filled, but still have some slots that are open. See Suzi Franklin or Sue Hodgkins to help with that job.

We also need help on Friday to fill our volunteer room obligation. Please see Linda Conners or Carolyn Swasey for that. They may also need help filling their required hours to fulfill their NET Rep duties.

If you know you will have some extra time during NET please consider helping in any way that you can, even if it's just cleaning up the room after one of your classes.

### Upcoming Birthdays:



August – Carolyn Swasey (5), Susan Mangano (11), Deb Hagman (13), Carol Beers Witherell (22), Marilyn Ford (26) and Debbie Fortin (30).

September – Shirley Day (7), Donna Wood (9), Donna McInnes (13), Laurie Keene 914), Anne Wilhelm (27), Leanne Kelly (27) and Fran Haas (30).

October – Janice Tomlin (10)

## 2019 Calendar of Events...

- September 8, 2019 **General Meeting** (afternoon Janice Tomlin)
- September 14-15, 2019 Rosemary West Seminar
- October 5, 2019 Board Meeting and **Newsletter Deadline**
- October 8-13, 2019 NET Convention
- November 10, 2019 **General Meeting** (afternoon Dotty Pullo)
- December 2019 Board Meeting and **Newsletter Deadline**
- January 5, 2020 **General Meeting** (afternoon Suzi Franklin)
- March 8, 2020 **General Meeting** (afternoon Tricia Joiner)
- May 3, 2020 **General Meeting** (afternoon Mary Svenson)
- June 13, 2020 Workshop with Cynthia Erikson
- July 24 & 25, 2020 – Seminar with Paulette DiGesare
- September 13, 2020 **General Meeting** (afternoon Susan Mangano)
- September 19 & 20, 2020 – Seminar with Lynne Andrews
- November 15, 2020 **General Meeting** (afternoon Peggy Daly)
- January 2021 General Meeting

Many thanks to our Backpack painting volunteers...



## 2019 WMDPG Elected Officers & Board of Directors...

President	Sue Hodgkins	603-225-9074	<a href="mailto:president@wmdpgnh.org">president@wmdpgnh.org</a>
Vice President	Peggy Daly		<a href="mailto:vp@wmdpgnh.org">vp@wmdpgnh.org</a>
Newsletter Editor	Carolyn Swasey	603-490-4429	<a href="mailto:editor@wmdpgnh.org">editor@wmdpgnh.org</a>
Secretary	Marilyn Moses	603-382-5284	<a href="mailto:esmjmoses@comcast.net">esmjmoses@comcast.net</a>
Treasurer	Dotty Pullo	603-864-0206	<a href="mailto:rosepullo@gmail.com">rosepullo@gmail.com</a>
Membership Secretary	Jacque Seastedt	603-475-9480	<a href="mailto:join@wmdpgnh.org">join@wmdpgnh.org</a>
Past President Advisor	Donna Frost	603-48-2386	<a href="mailto:dfrost49@gmail.com">dfrost49@gmail.com</a>
Board Members	Linda Conners	603-344-4534	<a href="mailto:lindaconners@gmail.com">lindaconners@gmail.com</a>
	Melanie Knox	603-529-7129	<a href="mailto:mek5@gsinet.net">mek5@gsinet.net</a>
	Suzi Franklin	207-646-3269	<a href="mailto:mefpsp@yahoo.com">mefpsp@yahoo.com</a>
Alternate	Janice Fusco	603-540-5933	<a href="mailto:jagfusco@comcast.net">jagfusco@comcast.net</a>

## 2019 Presidential Appointments...

Annual Raffle	Deb Courville	603-880-3791
Brown Bag Raffle	Susan Mangano	603-667-5709
Centerpieces	Kris Lafayette	978-667-5709
Chapter Energizer	Kris Lafayette	978-667-5709
Egg & Ornament Swap	Kris Lafayette	978-667-5709
Hospitality & ToileGate	Leeanne Kelly	603-689-8700
Installation Coordinator	OPEN	
Luncheon Chair	Linda Conners	603-344-4534
Memory Box Coordinators	Marilyn Moses	603-382-5284
	Jacque Seastedt	603-475-9480
NECC Co-chair reps	Carolyn Swasey	603-490-4429
	Linda Conners	603-344-4534
NET Volunteer Chair	Sue Hodgkins	603-225-9074
Nominating Committee	Kris Lafayette	978-667-5709
	Melanie Knox	603-529-7129
Parliamentarian	Kris Lafayette	978-667-5709
Service Project/Charity	Linda Conners	603-344-4534
Seminars / Workshops	Peggy Daly	<a href="mailto:vp@wmdpgnh.org">vp@wmdpgnh.org</a>
Social Media / Website	Donna Frost	603-648-2386

## Directions to Country Inn & Suites, 250 So. River Road, Bedford NH

From points North take a right on Rte. 3 South Everett Turnpike and take the Bedford Exit. Take a right on Rte. 3 and follow this south until you pass IHOP and Canoe, the next sight is the hotel entrance.

From points South, take Rte. 3 North Everett Turnpike, and get off at the Airport exit, before the toll booth. (Rte. 3 Merrimack). Go North on Rte. 3 toward Bedford. The hotel is 2 miles on the left. Get into the left lane just after the set of lights (junction of the Animal Hospital & Neurospine Center and Hampton Inn) From points East, take Rte. 101 West 293 and, get off at the Bedford Exit leading you to South River Rd/ Rte. 3. Take a right and follow that until you pass IHOP & Canoe, proceed and the hotel is on the right side up the hill.

Thank you, Suzi Franklin, for teaching a colored pencil workshop in your home. I understand the ladies had a 'hoot' of a time.



## Memory Boxes...



Please continue to support the Memory Box program. Thank you to those members who shared their talent and painted box for donation to a local hospital. Boxes are available for you to pick up at the next meeting. If you have any questions, please contact Marilyn or Jacque.

## WMDPG September 8, 2019 General Meeting...

**Date:** September 8, 2019  
**Place:** Country Inn & Suites  
 So. River Rd., Bedford, NH

**Directions:** Refer to page 2

### Agenda -

- **9:00 – 10:00:** Palette Potpourri, Coffee, Tea, and Ice Water (compliments of the chapter), Upcoming Event displays
- **10:00 – 12:00:** Business Meeting
- **12:00 – 12:30:** Cold Cuts, Soups, Salad & Desserts
- **12:00 – 4:00:** Colored Pencil project with Janice Tomlin – an original holly and berries design

## Things to Bring to the Meeting...

- ❖ **A friend or guest (if you bring 2 guests, you can enter a special raffle).**
- ❖ **Palette Potpourri item to place on display**
- ❖ **Your painted name tag**
- ❖ **Money for raffles and fundraiser tickets**
- ❖ **Brown bag goodies**
- ❖ **Memory Boxes**
- ❖ **Item for David's House**
- ❖ **Your smile and open heart**

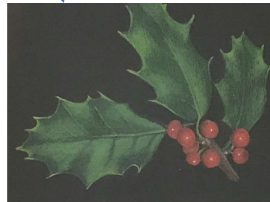
## Afternoon Program colored pencils & supplies...

**Prismacolor Colored Pencils required:** Black PC935, Light Umber PC941, Black Cherry PC1078, Lime peel PC1005, Chartreuse PC989, Pale Vermillion PC921, Crimson Red PC924, Poppy Red PC922, Dark Green PC908, Prussian Green PC109, Dark Umber PC947, White PC938 and Jasmine PC1012

**Supplies recommended:** pencil sharpener, a soft brush to whisk away pencil dust, a clipboard or other firm surface, an eraser, a fine stylus, white transfer paper, and white gel pen.

**Janice will have the design traced onto the paper.**

Tole It To The Mountains Volume 36, Issue 2 ~ editor@wmdpgnh.org ~ May 2019



Janice thank you for opening up your home studio to teach a workshop. Everyone enjoyed painting with you.



## September 8, 2019 General Meeting & Afternoon Program Registration Form Please RSVP by August 31, 2019

Name: \_\_\_\_\_ Phone #: \_\_\_\_\_  
 Email: \_\_\_\_\_  
 Guest Name: \_\_\_\_\_

### Complete the following -

	Member	Guest
Attending Business Meeting	Yes / No	Yes / No
Afternoon Program	Yes \$10 / No	Yes \$10 / No
Colored Pencils: Janice Tomlin Holly and Berries		
Lunch: Cold Cuts, Salad & Dessert	Yes \$10 / No	Yes \$10 / No

Make checks payable to WMDPG

Total enclosed: \_\_\_\_\_

Mail completed form to:

Jacque Seastedt  
 49 Sanborn Rd  
 Danville, NH 03819  
 603-475-9480  
 Email: join@wmdpgnh.org

**I give my permission to WMDPG to post my picture within our Newsletter, Publications, on our WMDPGNH.org website or on our Facebook page? YES \_\_\_ NO \_\_\_**

## WMDPG Secretary's May 5, 2019 Report...

The meeting was opened with the pledge of allegiance at the Country Inn in Bedford by President, S. Hodgkins. Members were welcomed. She explained the changes in the time frame of the meeting, due to the busy afternoon program consisting of a silent and a live auction, plus information stations. Coffee and baked goods were enjoyed while socializing and looking at all the auction items, the display of painting and penciling projects done by members, and the painted back packs which will be donated to children.

### OLD BUSINESS

Secretary, M. Moses. The minutes of the January 2019 general meeting were included in the last newsletter. There were no additions or corrections. A motion to accept the minutes was given by J. Fusco and C. Swasey and all were in favor. The report will be filed as accepted.

Treasurer, D. Pullo and D. Frost. The treasury report was in the newsletter. The auction sales will be paid at the front desk, with cash, check or credit card which is now available. Taylor Swasey attended the meeting to assist in the new credit card payments. J. Seastedt will be available to assist in the auction payments as well.

Membership, J. Seastedt. 26 members were present for the meeting with 25 staying for lunch and 25 for the afternoon program. A new member, Sandy Kaiser, from Vermont, was introduced and welcomed.

Vice President, P. Daly. Afternoon Program – The general meeting will be on September 8, with an original colored pencil project being taught by Janice Tomlin.

Workshops: A colored pencil Saw Whet Owl project will be held at Suzi Franklin's home in Wells, Maine on Saturday, June 8. Janice Tomlin is teaching a Santa done in acrylics, designed by Prudy Vannier, on July 27 in her Seabrook, NH studio. In 2020, Cynthia Erikson and Chris Watson will be planning new projects for our guild.

Seminars: Rosemary West will be the instructor for a 2 day seminar on September 14 and 15 of this year. Further information will be given on the surfaces. Two seminars are being planned for 2020. Lynne Andrews will be teaching on September 19 and 20, and Paulette DiGesare at a date not yet known. Some suggestions from Lynne are a 1 day winter sled project, a welcome sign with a pineapple, a plate with animals on it, and a scene on a box.

### NEW BUSINESS

Newsletter, C. Swasey. The deadline for the next newsletter is August 10. A new format with Power Point is being used for the newsletter.

Annual Raffle, C. Swasey – The magnificent quilt was displayed. Thanks were given to those members who painted the squares and special thanks given to Carolyn for coordinating, sewing and finishing the quilt as well as those who worked on the beautiful tuffet. Tickets for the drawing to be held at the January 2020 meeting will be available at the meetings and on the web site. A drawing will be held at each meeting for those who purchases tickets that day and a prize will be given to the lucky winner. Members are encouraged to sell tickets to friends, family and co-workers. J. Fusco will be making a poster showing the quilt and tuffet.

Annual raffle 2020 – Volunteers are needed to provide art projects for the raffle. A raffle coordinator position is to be filled.

New England Traditions – C. Swasey and L. Conners volunteered to be NET representatives. S. Hodgkins will be coordinating the NET job of class sales and registration, which is being shared with the Seastrokes guild. Members are encouraged to volunteer. She attended a meeting in Marlborough recently. S. Franklin is the coordinator for Seastrokes guild.

SDP: D. Frost and M. Knox reported on the convention, telling members about the banquet table decorations and centerpiece that they made. They will bring 2 painted back packs to the convention to display as our service project.

Market Days Service Project - K. Lafayette and L. Conners. They have made extensive plans for the exhibition at Concord Market days on June 20, 21 and 22, and are hoping for members to volunteer to assist. They want to have art pieces of different medias there for display. The tuffet and a large photo of the quilt will be displayed, along with raffle tickets.

Backpack Service Project – The creative painted backpacks were on display. S. Franklin kindly brought items to enclose in each bag for the children.

Hospitality and Tole Gate: L. Kelly. She informed members about the recent death of S. Mangano's dad.

Palette potpourri, L. Kelly. It is always a popular table display of members' varied art pieces. S. Franklin was the winner of the day's prize.

Memory boxes, J. Seastedt and M. Moses. Boxes were taken to St. Joseph Hospital in Nashua. A staff member of the family center had requested boxes recently. The boxes were greatly admired and we received genuine appreciation for them.

Chapter Energizer and Centerpiece coordinator, K. Lafayette. She was very happy with the larger attendance at the meeting and was looking forward to the afternoon program. She announced the "Atta Girl" for this meeting to be D. Courville, who gives much assistance and time to the guild, and a shout out "Atta Boy" to L. Provencher who has been a longtime volunteer. The creative centerpieces were made by D. Courville and L. Kelly and will be given away at the end of the auction.

Business cards for the guild have been designed and made by J. Fusco. They will be available for members to give to those interested in joining. A card will be enclosed in each memory box.

The meeting was adjourned, after motions made by C. Swasey and M. Knox, followed by lunch, made and served by L. Conners and her assistants. The stuffed shells, American chop suey, and salad were enjoyed by all. Member contributions of morning coffee baked goods, plus appetizers and desserts were very well appreciated as always.

The successful afternoon program of the auctions and demonstrations was well planned and run by the board members and volunteers. The auction was possible due to large donations of surfaces, patterns, paint and other supplies from Jillian Greene who is no longer painting and Ginny Dandretta who has moved to the south. Further information on the auction results, including the income made will be discussed at the next meeting. C. Swasey received donations of paint for the demonstrations from Deco Art and reminded members to support this company.

Respectfully submitted,

Marilyn Moses,  
WMDPG Secretary.

Tole It To The Mountains Volume 36, Issue 2 ~  
editor@wmdpgnh.org ~ May 2019

## Please think about running for the 2020 Board....

Please consider running of the Board of Directors or an Officer for the 2020 Election. We need members to stand up for the Guild and keep it going. What are YOU going to do to keep OUR Guild a vibrant organization, keep decorative painting alive, and NET an ongoing fun filled painters nirvana? Many hands make light work, and our Officers and board members have a great deal of fun planning future events. Want to know what big brush is coming to NH before everyone else? Join the Board and you can be the first to sign up for that awesome seminar everyone else is hoping to obtain a place in. Think about it. I will be asking at the September meeting and calling members to step up for the Guild. Thank you, Kris

## 2020 Raffle chair message from Kris Lafayette....

I have volunteered to Chair the 2020 Main Fundraiser. I know that we cannot top the awesome Quilt and Tuffet of 2019, but I am looking for ideas. Suggestions for a surface, ideas for type and style of painting, a design that will appeal to most people, and suggestions for an excellent painter to paint the surface are all needed. See, call, text, or e-mail me with your ideas. All suggestions will be considered. Thanks in advance.

## May Meeting Thank You's!!



Our auction was a great success thanks to all of you. We made over \$900!! That money has helped us stay close to our budget this year. It was great fun and many of us went home with a car full of things we may or may not have needed. Those who didn't go home with a full car went home with fun memories.

The auction was a success because we had so many people who helped with this huge task. I won't name names because I know I will forget someone and don't want to slight anyone. However, thank you to those who picked up, stored, sorted, and transported the items. Thanks to those on the committee and to those who organized the items and showed up on the day to put everything out. Thank you also to those who jumped in to help that day in a variety of tasks like keeping the records and taking the money, being an auctioneer or helper during the auction. It takes a village sometimes and to pull off the auction we certainly needed that village! Thanks also to those who helped make the info stations successful. I'm sorry I didn't get a chance to get around to see all of the other stations, but I heard from many that it was fun and informative. Thanks to all the leaders for their prep work and generous sharing of knowledge. Lastly, and as always, thank you to Linda Conners for another wonderful lunch!! Yum!!

Tote It To The Mountains Volume 36, Issue 2 ~ editor@wmdpgnh.org ~ April 2019

## 2019 Membership Application — Society of Decorative Painters

Name: \_\_\_\_\_  
 Last First Year Joined  
 Address: \_\_\_\_\_  
 City State 9 Digit Zip Code \_\_\_\_\_  
 Phone ( ) \_\_\_\_\_  Check box if this is a new address  
 New  Renewal  Membership# \_\_\_\_\_  
 Chapter Affiliations: \_\_\_\_\_  
 E-Mail Address \_\_\_\_\_ Website: \_\_\_\_\_

INDIVIDUAL MEMBERSHIP (US only): \$60  
 INDIVIDUAL/BUSINESS ASSOCIATE: \$90  
 HOUSEHOLD MEMBERSHIP \$40 (for immediate family member sharing same address)  
 TRIAL MEMBERSHIP \$40 (for new members who want an on-line copy only of the Decorative Painters  
 STUDENT MEMBERSHIP \$20 (online magazine only) (documentation must be provided)  
 Check Enclosed (payable to SDP) or CHARGE my:  Visa  MC

Card No.: \_\_\_\_\_ Exp. Date: \_\_\_\_\_  
 Total \$ \_\_\_\_\_  
 Date: \_\_\_\_\_ Signature: \_\_\_\_\_

Mail form and payment directly to:

SDP  
 1220 East First Street  
 Wichita KS 67124  
 or:

Join online at:  
<https://www.decorativepainters.org>

### Meeting/Event Cancellation Policy...

Cancellations for any WMDPG Event/Meeting will be posted on our website and/or Facebook page: [www.wmdpgnh.org](http://www.wmdpgnh.org)

<https://www.facebook.com/White-Mountain-Decorative-Painters-Guild-357770294262956/>

no later than 8:30 am on the day of that activity. If you do not have access to the internet, please call a friend who does or call any Board Member. (See Page 2 for phone numbers.)

### Policy—for Missed Events Project Pieces...

If an individual paid for a class and is unable to attend, arrangements must be made to obtain the materials within 2 months or by the next General Meeting. Otherwise, the class project will revert back to the Guild with no refund.

### Advertising rates – Deadline October 5, 2019

Ad copy and checks should be sent to:  
 Carolyn Swasey  
 10 Berkshire Ln  
 Londonderry, NH 03053  
 Any Questions? Email Carolyn at: [Wmdpgcarolyn@outlook.com](mailto:Wmdpgcarolyn@outlook.com) or call 603 490-4429

	MEMBER		NON-MEMBERS	
	1 Issue	5 Issues	1 Issue	5 Issues
Full Page	\$30.00	\$135.00	\$40.00	\$180.00
Half Page	\$15.00	\$67.50	\$20.00	\$90.00
1/4 Page	\$7.50	\$33.75	\$10.00	\$45.00
Business Card 3.5X2"	\$5.00	\$22.50	\$7.50	\$33.75
Little Notices Bulletin Board	\$1.00	N/A	N/A	N/A

### David's House Wish List...

Paper towels  
 Tissues  
 Paper plates & bowls  
 Plastic utensils  
 Paper cups - 5 oz. only  
 Laundry detergent - powder  
 Kitchen sponges  
 Dishwashing liquid  
 Liquid hand soap  
 Dryer Sheets  
 Stain Removers  
 Juice boxes, Concentrated juices  
 Cookies and crackers  
 Cereal Bars  
 Cereal - single serving and regular  
 Pop tarts  
 Fruit snacks  
 Applesauce  
 Pudding Snack cups  
 Microwave Popcorn  
 Single serving microwave meals  
 Soups (small size)  
 Beef stew (small size)  
 Coffee creamer (powder)  
 Spaghettios/Ravioli (reg. size)  
 Sanitary napkins  
 Tampons  
 Panty shields  
 Nursing pads (disposable)

2019 Membership Application — White Mountain Decorative Painters' Guild  
*You must be a current member of the SDP to be a member of WMDPG.*

Name: \_\_\_\_\_  
 Last First Year Joined

Address: \_\_\_\_\_  
 City State 9 Digit Zip Code Check box if this is a new address:

Phone ( ) \_\_\_\_\_ E-Mail Address \_\_\_\_\_

SDP Membership # \_\_\_\_\_  
 New Member \$15.00  Renewal \$15.00

- Newsletter Hardcopy add \$10/year (optional)
- I do not have a computer! Mail for Free!
- Do not list email / phone to Membership

Let Us Wish You Happy Birthday: MM \_\_\_\_\_ DD \_\_\_\_\_

Shop Owner  Teacher  Student

Would you be a teacher at a meeting or a workshop? Yes \_\_\_ No \_\_\_  
 Medium Taught \_\_\_\_\_

Would you be willing to be contacted for rides? Yes \_\_\_ No \_\_\_

Today's Date: \_\_\_\_\_

Referred By: \_\_\_\_\_

Questions? Call Jacque Seastedt , 603-475-9480 or email at: [join@wmdpgnh.org](mailto:join@wmdpgnh.org)

**I give my permission to WMDPG to post my picture within our Newsletter, Publications, on our WMDPGNH.org website or on our Facebook page?**  
 YES \_\_\_ NO \_\_\_

**Please send form and payment (check made payable to WMDPG), to:**

Jacque Seastedt  
 49 Sandown Road  
 Danville, NH 03819

## Concord NH Market Days...

Market Days were held in Concord NH on July 20,21, and 22, 2019. The WMDPG participated in this outdoor festival. Our focus was to showcase different styles of decorative art and sell raffle tickets for our awesome hand painted quilt and tuffet. We also wanted to inform the public about decorative painting, WMDPG, and our donations to area charities, and other non-profit groups.

These beautiful pieces were available for the public to view and learn about fabric painting. The colorful tuffet attracted much attention. Sales of tickets were slow on Thursday July 20, as high winds and rain, kept us inside, but Friday and Saturday had good sales and we sold \$151 worth of tickets to friends, family, and the public.

Our table was situated in front of "Hilltop Consignment Gallery" on Main Street. Sue McCoo, my sister, donated space in front of her store to the Guild.

Linda Connors, co-chair, obtained a certificate from the city of Concord. This gave the White Mountain Guild non-profit status and permission to sell raffle tickets. We tried to display some painted pieces, but high winds toppled all our efforts to set up a display. Mt Washington's winds got nothing over Concord!

Linda and I would like to thank Sue Hodgkins, Donna Frost, and Melanie Knox for all their help with providing tents, display racks, and set up skills. Paula Brown, Tricia Joiner, Sue Duffy, Donna Frost, and Sue Hodgkins also volunteered to help with display and raffle ticket sales. We got to know one another better, enjoyed some awesome street food, and did some people watching! We would also like to thank Carolyn Swasey, Jan Fusco, and Peggy Daly for their help with the event.

Suggestions for next year include a MITI for kids and adults, info on decorative painting, as well as selling raffle tickets for the 2020 fundraiser. Linda and I suggest having a table for the Saturday of Market Days only as the extra time did not result in extra sales.

On the plus side, we did increase our presence to the public and get some raffle ticket sales to people other than us, our friends, and our families. We also publicized our donations to New Hampshire based charities and non-profits that benefit many people.

Respectfully submitted,  
 Kris Lafayette and Linda Connors  
 (co-chairs)

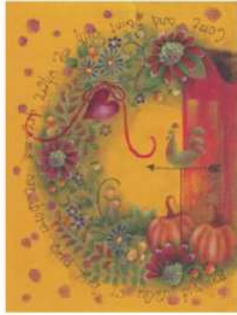
## May Meeting Afternoon Program Information Stations...



and Kris L. demonstrating Quikwood

**NET  
SAVE  
THE  
DATE  
...**

**NEW ENGLAND TRADITIONS**  
Celebrating Decorative Painting in New England!



**AN AUTUMN GARDEN**  
October 8-13, 2019  
Marlborough, Massachusetts

Our 21st year!

The website is back up and working:  
<http://www.newenglandtraditions.org/>

**NET TRADE SHOW OPEN TO THE PUBLIC\***

Friday & Saturday, October 11-12  
9:30 a.m. – 6:00 p.m.

Best Western Royal Plaza Ballrooms, Marlborough, MA

- |  |  |
|--|--|
| Bear With Us   | <a href="http://www.bearwithusinc.com">www.bearwithusinc.com</a>                   |
| Beth Wagner Designs  | <a href="http://www.designsatbethwagner.com">www.designsatbethwagner.com</a>       |
| Bobbie Campbell  | <a href="http://www.bobbiecampbell.com">www.bobbiecampbell.com</a>                 |
| Brushes & More   | <a href="http://www.brushesandmore.com">www.brushesandmore.com</a>                 |
| Cindy's Brush Strokes  | <a href="http://www.cindysbrushstrokes.com">www.cindysbrushstrokes.com</a>         |
| Country Schoolhouse  | <a href="http://www.countryschoolhousearts.com">www.countryschoolhousearts.com</a> |
| Cupboard Distributing  | <a href="http://www.cdwood.com">www.cdwood.com</a>                                 |
| DecoArt  | <a href="http://www.decoart.com">www.decoart.com</a>                               |
| Dynasty/FM Brush   | <a href="http://www.dynastybrush.com">www.dynastybrush.com</a>                     |
| Gifts Galore by Gloria   | <a href="http://www.giftsgalorebygloria.com">www.giftsgalorebygloria.com</a>       |
| Jane Allen Creates   | <a href="http://www.janeallencreates.com">www.janeallencreates.com</a>             |
| JB Wood Products   | <a href="http://www.jbwood.com">www.jbwood.com</a>                                 |
| Jo Sonja's   | <a href="http://www.josonja.com">www.josonja.com</a>                               |
| Linda Sharp  | <a href="http://www.lindasharpdca.com">www.lindasharpdca.com</a>                   |
| Lynne Andrews Folk Art   | <a href="http://www.lynneandrews.com">www.lynneandrews.com</a>                     |
| Marlene's Folk Art   | <a href="http://www.marlenekreutz.com">www.marlenekreutz.com</a>                   |
| Maureen Baker  | <a href="http://www.maureen-baker.com">www.maureen-baker.com</a>                   |
| Quilted Acorn  |  |
| <a href="http://www.reflectionsofthepastpatterns.com">www.reflectionsofthepastpatterns.com</a> |  |
| Scharff Brushes  | <a href="http://www.artbrush.com">www.artbrush.com</a>                             |
| Society of Decorative Painters   | <a href="http://www.decorativepainters.org">www.decorativepainters.org</a>         |
| Susan Tabor  | <a href="http://www.bluemooingourds.com">www.bluemooingourds.com</a>               |
| The Creative Touch   | <a href="http://www.thecreativetouch.com">www.thecreativetouch.com</a>             |
| Tole Sampler   | <a href="http://www.tolesampler.com">www.tolesampler.com</a>                       |
| Tricia's Legacy Designs  | <a href="http://www.tricias.com">www.tricias.com</a>                               |

## NET Convention...

Volunteers are needed to fulfill our assigned duties to man the class registration table on a daily basis and on Friday October 11<sup>th</sup> we must cover the Volunteer Station.

Please contact Carolyn Swasey ([wmdpccarolyn@outlook.com](mailto:wmdpccarolyn@outlook.com)) or Linda Conners ([lindaconners@gmail.com](mailto:lindaconners@gmail.com)) if you can volunteer on Friday anytime between 7am – 10pm. We need coverage for the following time slots highlighted in yellow.

Friday 10/11/19 NET Volunteer sign-up	WMDPG	Available - no time commitment
7-8am	Kris Lafayette	Melanie Knox
8-9am	Peggy Daly	
9-10am	Peggy Daly	
10-11am		
11am-noon	Paula Brown	
12-1pm	Anne Wifholm	
1-2pm	Janice Fusco	
2-3pm	Donna Frost	
3-4pm		
4-5pm	Carol Bell	
5-6pm		
6-7pm		
7-8pm		
8-9pm		
9-10pm	Carolyn Swasey	
Clean up crew	Anne Wifholm	
	Marilyn Moses	
	Jacque Seastedt	

**Please bring your calendar of NET classes to the meeting.** We still need volunteers to help with our WMDPG job, class sales, and registration. We have many of the times filled, but still have some slots that are open. See Suzi Franklin or Sue Hodgkins to help with that job.

We also need help on Friday to help fill our volunteer room obligation. Please see Linda Conners or Carolyn Swasey for that. They may also need help filling their required hours to fulfill their NET Rep duties.

If you know you will have some extra time during NET please consider helping in any way that you can, even if it's just cleaning up the room after one of your classes.

We also need volunteers to cover the class registration desk on a daily basis. Sue Hodgins ([president@wmdpgnh.org](mailto:president@wmdpgnh.org)) is the contact for those interested in staffing the class registration desk. The coverage times are:

Tuesday 4:30-6pm.

Wednesday 7am-6pm.

Thursday: 7am-6pm.

Friday: 7am-6pm.

Saturday: 7am-5pm.

Sunday: 7-8am.

NET enrollment continues to grow. In June there were 346 attendees, compared to 358 in October 2018.

Rosemary West Acrylic Seminar, September 14—15, 2019

9:00am- 4:00pm each day with 1 hour for lunch

Location: Londonderry Senior Center, 535 Mammoth Rd, Londonderry NH 03053

Saturday September 14th



Box top is 5"

Sunday September 15th



Class fee is \$70 per day..

Included in your seminar fee: Coffee, Tea and breakfast treats in the morning. Afternoon dessert. In class use of JoSonja paints, line drawing, directions and picture. To ensure up close detail, Rosemary uses a camera/projector to teach.

**YOU PROVIDE:** the surface of your choice and lunch or we can order out - (one hour break for lunch)

A block of rooms has been reserved at the Best Western Plus, which is located about one mile from the Senior Center. Reserved block rate until is effective until 8/14/2019. Includes breakfast.

BEST WESTERN PLUS Executive Court Inn  
13500 South Willow Street  
Manchester, NH 03103

Please call: 603-627-2525 to make your reservation

Group name: WMDPG and the rate is \$125.00 plus 9% tax per night (single/double)

To hold your seat please complete this form and send it along with a check (payable to WMDPG) to Dorothy Pullo by August 7th

WMDPG Seminar Coordinator, 7 Pepper Hill Road, Londonderry NH 03053

Questions should be directed to: Dorothy Pullo - [rosedpullo@gmail.com](mailto:rosedpullo@gmail.com) or 603-864-0206

Saturday, September 14th class fee \$70.00 \_\_\_\_\_ Sunday, September 15th class fee \$70.00 \_\_\_\_\_

Total \$ \_\_\_\_\_

Name: \_\_\_\_\_

Street: \_\_\_\_\_

City \_\_\_\_\_ State \_\_\_\_\_ Zip \_\_\_\_\_

Phone \_\_\_\_\_ E-mail \_\_\_\_\_

Jo Sonja Paints will be provided for class use. Please remember to bring paint cubbies and a wet palette.

The prep instructions and line drawing will be emailed or mailed to you once Dotty receives your payment and registration form.


The source for the box is Bear With US and the item number for the box is 2891 and the puffed heart is 2009. <https://www.bearwithusinc.com/proddetail.php?prod=RW11>

Sunday's design was originally painted on a metal tray, and this surface is no longer available. The design measures 15" horizontally and 10" vertically. Measurement does not include the design on the four corners.

## Dotty's Treasurers Report...

WMDPG Income and Expense	January	February	March	April	May
<b>Income</b>					
General Meetings	230				240
Income From Seminars	1490				
Meeting Auction					837.25
Membership Dues	75	90			75
Other Inc	41				18
Ways and Means	232				
<b>Expenses</b>					
Dues	250	132			
Afternoon Program	252			116.16	245.25
Seminars	1150			30.4	
Food & Dining (Lunch Expense)	26.35				27.83
Prof and Legal Fees	68	125			
Rent	486				
Gifts and Donations		15			
Income	2068	90		0	1170.25
Expense	2232.35	272		146.56	273.08

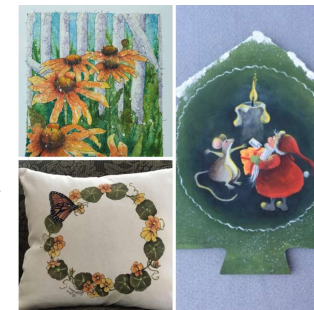
## Donna's SDP Corner... What is happening...



**Are you ready to be an Early Bird and renew your membership for the 2020 year!**

EARLY BIRD will start July 1st and go through September 30, 2019.

SDP has such an exciting year coming up and thrilled you are going to be part of it. You will receive THREE FREE e-packets for renewing your membership early and some amazing benefits for being a member all year long! Make sure you check out our Members only Educational Library on our website. You will find demos, tips and tricks and even full projects!



## Certification Seminar

Introduction to Certification Seminar taught by Sue Pruett, MDA at the SDP home office located in Wichita, Kansas from November 8-11 2019  
Cost: \$350.00

Includes: surface, critique, theory booklet covering artistic concepts that can be transferred to all painting genres.

Student will work independently using past Certification designs in their category with teacher assistance. Students will gain a greater understanding of how to plan a painting including but not limited to: color schemes, color harmony, temperature, value relationships, background color choices, blending, how to control intensities, stroke-work, and overall effect.

Class size is limited for individualized attention.

## Centerpieces...



Thank-you Leanne K. and Debbie C. Your center - pieces were beautiful.

## Mark your calendars...

### 2020 CALENDAR OF EVENTS

- January 4:** Suzi Franklin-Maureen McNaughton *design*
- March 15:** Tricia Joiner-*flowers on fabric and lace*
- May 3:** Mary Svenson-TBD
- June 13:** Cynthia Ereksen-Box
- July 24-25:** Paulette DeGesare-TBD
- September 13:** Sue Mangano-*Autumn Silk Scarf*
- September 19-20:** Lynne Andrews-TBD
- November 15:** Peggy Daly-*Christmas ornament*



Chapter of Distinction 2019

**Congratulations! You are a Chapter of Distinction for 2019. I**

### Mexican Chef Taco Salad (Julie Cloud)

Brown 1 pound of ground beef. Add (to browned burger) a 15 ounce can of drained kidney beans, salt and pepper to taste. Simmer 10 minutes. Drain well and mix into salad

Chop:  
1 onion  
4 tomatoes  
1 head of lettuce  
1 large avocado

Top with:  
4 oz. grated cheese  
8 oz. 1000 Island dressing  
Hot sauce to taste


Crunch and add one bag of Doritos, plain or taco flavor. Serve with salsa. French bread is a nice side. Yummy!

## 2019 Raffle News...

Raffle prizes are florals painted on a fabric tuffet or a King-sized hand painted quilt. Please continue to promote our annual fundraiser by selling tickets.



You just never know when you might win something extra at a meeting. Fran G. won the raffle prize this time (a complete set of DecoArts new 2019 Glitter Paints). Who will be next?



**WHITE MOUNTAIN DECORATIVE PAINTERS  
 GUILD 2019 NON-PROFIT RAFFLE TICKET.**  
 (ONE CHANCE TO WIN).  
 \$1.00 PER TICKET OR 6 FOR \$5.00.

Drawing January  
 2020 Meeting.  
 Thank You

Name: \_\_\_\_\_  
 Address: \_\_\_\_\_  
 \_\_\_\_\_  
 Phone: \_\_\_\_\_  
 Email: \_\_\_\_\_



**WHITE MOUNTAIN DECORATIVE PAINTERS  
 GUILD 2019 NON-PROFIT RAFFLE TICKET.**  
 (ONE CHANCE TO WIN).  
 \$1.00 PER TICKET OR 6 FOR \$5.00.

Drawing January  
 2020 Meeting.  
 Thank You

Name: \_\_\_\_\_  
 Address: \_\_\_\_\_  
 \_\_\_\_\_  
 Phone: \_\_\_\_\_  
 Email: \_\_\_\_\_



**WHITE MOUNTAIN DECORATIVE PAINTERS  
 GUILD 2019 NON-PROFIT RAFFLE TICKET.**  
 (ONE CHANCE TO WIN).  
 \$1.00 PER TICKET OR 6 FOR \$5.00.

Drawing January  
 2020 Meeting.  
 Thank You

Name: \_\_\_\_\_  
 Address: \_\_\_\_\_  
 \_\_\_\_\_  
 Phone: \_\_\_\_\_  
 Email: \_\_\_\_\_



**WHITE MOUNTAIN DECORATIVE PAINTERS  
 GUILD 2019 NON-PROFIT RAFFLE TICKET.**  
 (ONE CHANCE TO WIN).  
 \$1.00 PER TICKET OR 6 FOR \$5.00.

Drawing January  
 2020 Meeting.  
 Thank You

Name: \_\_\_\_\_  
 Address: \_\_\_\_\_  
 \_\_\_\_\_  
 Phone: \_\_\_\_\_  
 Email: \_\_\_\_\_



**WHITE MOUNTAIN DECORATIVE PAINTERS  
 GUILD 2019 NON-PROFIT RAFFLE TICKET.**  
 (ONE CHANCE TO WIN).  
 \$1.00 PER TICKET OR 6 FOR \$5.00.

Drawing January  
 2020 Meeting.  
 Thank You

Name: \_\_\_\_\_  
 Address: \_\_\_\_\_  
 \_\_\_\_\_  
 Phone: \_\_\_\_\_  
 Email: \_\_\_\_\_



**WHITE MOUNTAIN DECORATIVE PAINTERS  
 GUILD 2019 NON-PROFIT RAFFLE TICKET.**  
 (ONE CHANCE TO WIN).  
 \$1.00 PER TICKET OR 6 FOR \$5.00.

Drawing January  
 2020 Meeting.  
 Thank You

Name: \_\_\_\_\_  
 Address: \_\_\_\_\_  
 \_\_\_\_\_  
 Phone: \_\_\_\_\_  
 Email: \_\_\_\_\_