



Tole It To The Mountains

www.wmdpghn.org

The Official Newsletter of the White Mountain Decorative Painters' Guild

An Affiliated Chapter of the Society of Decorative Painters

Volume 35, Issue 4

editor@wmdpghn.org

October 2018

Donna's President's Palette...

Wow! It was my lucky day at our last meeting when I was one of the table centerpiece winners. Thank you Carol Beers-Witherell and Shirley Cochis (and their friend) who used witch's hats each decorated with a Lynne Andrews' Wicked Witchie pattern on a mini mink board and a fun little treat bag with a Halloween cutout and tea light inside. Thanks, ladies! It is so much fun to see what each decorating team comes up with each meeting.

Also, thank you, Carol Beers-Witherell for your years as chapter treasurer. We are sorry you need to resign before the end of your term but best wishes on your new full time job as town clerk.

The chapter has received a generous donation of surfaces and books from former members Ginny Dendretta and Jill Greene who are downsizing. Ginny also collected \$60 for items she sold at her yard sale and this money was earmarked as a donation to David's House. We have a volunteer team to plan what to do with everything. Some of the painted items will be used as raffle prizes, books and ornaments were sold at the September meeting earning \$108 with the remaining items going to Cindy Harrison to sell for the chapter on the internet. Jacque Seasted matched up a wonderful tin bowl and packet from Jill Greene for the meeting prize drawing for those who bought annual raffle tickets that day. \$82 in annual raffle tickets were sold. The Brown Bag Auction brought in \$38.

Although we have counted on the raffles and lunches to defray to cost of our meeting room and other expenses, I thought it was possible that we might consider a second charity. Girls Inc. was suggested by Carolyn Swasey since she is involved with the organization. She said volunteer time and painting supplies are most needed.

When we vote on the budget, an amount will be determined then. In the meantime, Carolyn passed around a sign-up sheet for those members who might be able to volunteer time teaching at Girls Inc. Also, due to the unexpected closing of the Museum in Atlanta, SDP agreed to become the new home for our decorative painting history. The original items were from SDP's Decorative Arts Collection but were moved to Atlanta where

they would get more exposure. Since this resulted in unexpected trucking and packing expenses, the White Mountain Board voted to donate \$100 to the special fundraising drive. For every \$100 received, SDP opens a box on Fridays on Facebook live. It has been a fun way to raise money as well as show members the beautiful artwork that has returned to Wichita.

Our popular meeting Palette Potpourri resulted in Janice Tomlin agreeing to teach a one day workshop of Prudy Vannier designs. Suzi Franklin also agreed to teach another colored pencil bird at her Wells, Maine studio.

Dates to be announced.

Kris Lafayette and Linda Connors volunteered to promote decorative painting at Concord NH's Market Days in June. The outdoor spot was donated by Kris's sister and store owner, Sue McKoo. Both members felt that this could be a big opportunity to promote the chapter next year. An updated teacher tri-fold was suggested. Any member who teaches can have free advertising in this brochure.

The Quilt Project for our 2019 Annual Raffle is in full swing. Carolyn Swasey had the tuffet sections that were painted by Suzi Franklin to show people at NET. We expect to have the quilt on display and sell raffle tickets to the public on several occasions. In the meantime, everyone will want to buy raffle tickets for the beautiful Betty Caithness clock painted by Janice Tomlin. The drawing will be at our January meeting.

This is already a lengthy article but I still need to thank all the members who volunteered at NET, especially the very hard working Kris Lafayette and Anne Wifholm who chaired the Volunteer Room. NET's popularity is growing as evidenced by a 20% increase in attendance and a very active trade show. We personally met three people from TX and one from Colorado not to mention other states outside of New England and New York. Word to the wise, next year don't wait too long to register or you won't get your first choices.

Many hands make light work and we all should be proud of what our chapter is accomplishing.

Donna Frost

**The deadline for the next issue of WMDPG
Tole it to the Mountains is December 15, 2018**

Sue's Scribbles...

Happy Fall!!

We are coming to our last meeting of the year and as I look back, I wonder where the year went. It happens every year but somehow I'm still surprised that it has happened yet again.

We will be painting a winter ornament in November just to solidify that winter is indeed coming. You'll find a picture of the cardinal under glass ornament elsewhere in the newsletter. There are a few tricks in this piece that I think you'll find useful. We should have enough ornaments to paint two, if you would like. You'll be able to take one home and if you are able to paint another, we encourage you to donate it to David's House.

The paint list is on the meeting registration page (pg. 8), but please don't feel like you have to bring paints if you don't have them. They are small ornaments and won't take much paint. We should be able to share. I will have a full set myself. Please bring your regular painting supplies and we will mostly use the smaller brushes if you want to leave some at home.

I just got back home from Net, fully inspired. I had a great time and took some awesome classes. I also spent too much money! Anyone else in that same boat? I do it every year, and vow not to the next...but it's so much fun! Don't forget to bring your finished (or unfinished) pieces for the Palette Potpourri table.

Arlene Linton will be coming in January. Please use the registration page (pg. 9) in the newsletter and sign up early. We will be opening this up to other chapters and it will be first come first serve. You'll have a bit of a head start on the others, but not by much. We have voted on a couple of beautiful pieces which I can't wait to paint. The wreath is my favorite but that could change when I see the pieces in person.

Enjoy the day,
Sue

Memory Boxes...

Please continue to support the Memory Box program. Thank you to those members who have shared their talent and painted a box for donation to a local hospital. Boxes are available for you to pick up at the next meeting. If you have any questions, please contact Marilyn or Jacque.

2018 Raffle News...

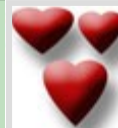


The unveiling of the Betty Caithness 2018 raffle prize occurred at the September meeting. Our very own Janice Tomlin did a wonderful job that would surely make Betty proud. Please continue to sell tickets to friends and family.

The prize is a hand painted wall cabinet/clock that was donated and painted by Janice. The cabinet measures 30" high, 11.25" wide and 5.5" deep. The bottom section opens, and has shelves.

The landscape wraps around the 3 sides.

There is still time to purchase raffle tickets. The winning ticket will be drawn at the January 2019 meeting. If you have any questions, please contact: Susan Mangano



Secret Pals

www.secret-pals.blogspot.com



At the November meeting you will find out who your secret pal is—anticipation. Therefore please do not forget to bring your Secret Pal's SURPRISE gift

If you any questions about Secret Pals, please contact Peggy Daly. She will also be in charge of Secret Pals program in 2019.

Peggy had a great suggestion: it would be great, if you could include a handpainted piece.

If you are interested in participating in the 2019 program, please complete the Secret Pals form that is included at the end of this newsletter.

Welcome to the Secret Pals Program. What a great way to get to know your fellow painters better and smile to their faces. You are asked to bring a gift for your Secret Pal to each meeting AND pick up the gift from the member who has you as their Secret Pal. Please remember that you are responsible for getting your gift to the meeting and picking up yours as well. If you cannot attend a meeting, please send your gift with another member, or mail it to you Secret Pal.

Exchanges take place at the March, May and Sept. meetings. At the November. meeting, each Secret Pal will exchange a hand painted gift and will reveal their identities. You will receive your Secret Pal information before the March meeting. Peggy Daly must receive your completed form by January 31, 2019. This will only work if everyone fulfills their responsibility. Hope everyone has fun. Enjoy!

Name* _____ Phone* _____

Occupation _____ How long have you been painting _____

Address* _____

Email* _____

Birthday (MM/DD) _____

Married _____ Anniversary _____ Single _____ # of children _____

Favorite color(s) _____

Favorite flowers _____

Favorite foods _____

Favorite holiday _____

What colors is your house decorated in _____

What style if your house decorated in _____ ----- _____

Favorite artists _____ Favorite medium _____

Favorite style of music _____

Types of books you enjoy _____

Hobbies other than painting _____

Items you like to collect _____

Special interests _____

Something about me most don't know _____

Something I'm looking forward to this year _____

Anything you would rather not receive _____

Anything else your Secret Pal should know _____

Allergies _____

Pets _____

Please feel free to provide additional information or not to respond to some questions about you.

If you have any questions, please contact Peggy Daly at 603-456-2036, and her email address is: peggy114@tds.net. Peggy's mailing address is: WMDPG Secret Pal Coordinator c/o Peggy Daly, PO Box 15, Warner, NH 03278

*** Note: Mandatory completion fields for Secret Pal Coordinator**

2019 ELECTIONS for WMDPG OFFICERS and EXECUTIVE BOARD MEMBERS

Our guild exists due to the dedication of the Officers and Board Members who volunteer their time to perform the necessary duties to keep WMDPG a vibrant, active chapter of SDP. We exist to advance artistic knowledge, share our art form, and to make and keep friendships alive. We all enjoy the perks of membership, but without Officers and Board members, it will all go away.

PROPOSED BALLOT 2019 WMDPG

Vice President/President Elect:	Peggy Daly
Newsletter Editor:	Carolyn Swasey
Secretary:	Marilyn Moses
Membership Secretary:	Jacque Seastedt
Treasurer:	Dotty Pullo
Board of Directors (3)	Linda Connors
	Melanie Knox
	Suzi Franklin

I (Kris) worked hard calling people to step up and try to fill these positions. Many members have been members of the Board and/or Officers in the past and have given their time and talents to OUR Guild. The Election will be held at the November 11 meeting. Each office (except VP/President Elect) will have a blank line below the Nominee's name. I will ask for a nomination from the floor and all members are allowed to nominate someone for these positions. Please make sure that the person nominated has agreed to accept that specific position. It would be wonderful to have some contested positions. PLEASE think about keeping our Guild bigger and better in 2019.

One on the many benefits →

Please consider running for a position.

Kris Lafayette, Nominating Chair
978 667 5709



Ornament Swap

Our annual ornament swap will be held at the November meeting. Please bring a wrapped, hand painted, signed, ornament to the November meeting. Each ornament will be put in a brown lunch bag and all who brought an ornament will be able to pick an ornament to bring home for their tree. This is always a fun time, as our fellow painters admire each other's creativity.

Please paint and bring in an ornament for David's House...

If you have time, please consider donating a hand painted ornament to be given to David's House, a home-away-from-home, for families of children receiving treatment at Dartmouth-Hitchcock Hospital located in Lebanon, NH. This is the Guild's long time charity. This year the Christmas tree themes include, barnyard animals, (pigs, sheep, ducks,) bears, insects, and a tree with an outer space theme. Any ornament that you would like to paint and donate will be warmly accepted. Also, in each Newsletter is a wish list of items for David's House. These items are easy to donate, just put an extra can of soup or a box of cookies in your cart at the grocery store, and the remember to bring them to the November 11, 2018 WMDPG meeting. Thank you all.
Kris

Recipe from Linda's Kitchen...

Roasted Butternut Squash & Apples

1. Cut Squash into bite sized cubes
2. Place Squash cubes on the baking sheet and sprinkle with Olive Oil & Cinnamon.
3. Chop Apples into cubes (you will need 5 apples, if you used a medium sized squash).
4. Place the Apples on the baking sheet and toss them into the Squash.
5. Bake at 350 degrees until they are done.
6. Remove from the oven and pour some Maple Syrup or Brown Sugar.
7. Optional: you can add Walnuts.

Enjoy?
Linda Connors



September Centerpieces. 'Hats off' to Carol Beers-Witherell and Shirley Cochis. So very creative.



Paula Brown has volunteered to paint the November meeting's centerpieces. Please check with Kris at the meeting and let her know if you are willing to paint centerpieces for one of the 2019 meetings. Thank you all my friends...Kris

WMDPG General Meeting Minutes - Sunday, September 9th

President, D. Frost opened the meeting at 10:06 AM with the Pledge of Allegiance at the Country Inn in Bedford. Members were welcomed. There were no guests at the meeting.

Tole Gate: D. Corville substituted for L. Kelly who was absent.

Secretary: M. Moses reminded members that the minutes of the last meeting were published in the Newsletter. No additions or corrections were given. The minutes were accepted and filed as published.

Treasurer: C. Beers-Witherell. D. Frost announced that Carol had resigned the position, due to the amount of time she must spend on her new job as Town Clerk of Kensington, NH. Carol was thanked for her service. D. Frost will fill the treasurer's position until a new treasurer takes office in January.

Membership: J. Seastedt. 23 members attended the meeting, 20 stayed to enjoy the lunch and 12 attended the afternoon painting program.

Newsletter: C. Swasey. A new deadline for the newsletter will be October 13. She requested that admissions be sent to her as soon as possible.

Vice President: S. Hodgkins.

Afternoon Programs: At the next meeting on November 11, S. Hodgkins will teach a new technique, painting a bird under glass. If anyone sees oval glass ornament surfaces at stores, Sue requested that they contact her. The size is approximately 4.5 inches in length.

Workshops: Arlene Linton will be teaching 2 projects on January 19 and 20, 2019. Two more classes are offered for 2019 and were displayed on the table for members to vote on. J. Tomlin is offering a class with a Prudy Vannier design. And S. Franklin will teach one of her colored pencil bird designs. We are fortunate to have such talented members in our guild. Dates to be announced.

Seminar: We will be hosting Rosemary West on September 14 and 15, 2019. S. Franklin will contact Sea Strokes Guild to be sure these dates do not coincide with this seminar.

Chapter Energizer: K. Lafayette. Kris had two gifts ready to be presented to Shirley Day, as the "Atta girl" for the May meeting, and Margie Rowe as the "Atta girl" recipient for the September meeting. Both members were absent, so she will try again in November to sing the praises of both of these ladies and present them with the gifts.

Kris and L. Connors participated in Concord's Market Days in June. They set up an "information and painting station" in front of Kris' sister's store, the Viking House. They offered information to the public on brushes, painting, and our local White Mountain guild. Adults and children in attendance enjoyed painting small wooden toys and other pieces they could turn into magnets and pins. The event was well attended, with great weather. It is a three day event, although they had their table for just part of Saturday. Linda stated that this could be a great outlet for the guild to pursue in the future, which could result in recruiting new members for SDP and WMDPG, as well as possibly selling hand painted items to help our treasury. Kris and Linda will look into expanding this outlet. C. Swasey said this would be a good opportunity to showcase the raffle quilt. It was also suggested that the teacher tri-fold be updated for this event.

S. Day and M. Rowe have offered to design and supply the centerpieces for May and September of 2019. Kris stated that her search for members willing to run for office and be on the board has been quite successful so far.

Secret Pal: P. Daly. She has graciously taken over this position for L. Provencher who has just had back surgery. She reminded Secret Pal participants to include a painting in the November Secret Pal gift.

Centerpieces: The fabulous centerpieces were designed and produced by S. Cochis and C. Beers-Witherell. Special thanks were given to Bryn Hazelwood for cutting out the small bags on her Cricut machine. Winners from the raffle were happy to take home a centerpiece for their fall table.

NET: A. Wifholm. Net registrations have increased this year to 340! Some classes are still open and are available on New England Traditions' website. Monitors are needed for the classes which allows one to learn from the teacher while assisting her in small jobs. Contact K. Lafayette to volunteer for the many tasks necessary for an efficient and successful convention. Last year the painters cleaned the rooms at the end of the class which was a quick way to have it ready for the next class. Cleaning supplies will again be available at the rear of the room. Volunteer pins will be given to those filling out a form for the hours worked. Please call or email them if you are able to help out.

D. Frost: Recent donations of wood, ceramic and books, donated by Ginny Dandreta, were sold bringing in \$108. D. Corville also brought wood and other items to sell from Helen Sanford, who was recently widowed. Members especially enjoyed browsing through the older books which brought back memories of past artists.

WMDPG General Meeting Minutes continued - Sunday, Sept. 9th

Memory boxes: J. Seastedt and M. Moses. Jacque informed members that we have a small collection of painted boxes. When we receive a few more boxes, hospitals will be contacted to see if they are needed. D. Corville brought in a lovely painted box.

2018 raffle: J. Tomlin brought in the clock she has painted for the raffle. This is a pattern from Betty Caithness who died last year and it was done in memory of her. Betty would be extremely pleased with the beautiful painting of her pattern. Thanks were given to Janice for painting this treasure. The clock will be raffled at the January meeting. J. Tomlin volunteered to ship the cabinet to whomever wins the piece at her own expense.

2019 raffle: C. Swasey stated that the 12 blocks have been completed for the quilt and many thanks were given to the members who painted them. S. Franklin is painting the triangles for the tuffet.

New Business:

D. Frost told members about the \$100. donation to SDP for the unboxing of the museum pieces from Atlanta. The board had voted to send two \$50. checks to SDP for this purpose.

A committee was formed at the board meeting to discuss various means of selling the wood, patterns and supplies which had been donated by a former member, Jill Greene. The committee consists of J. Seastedt, S. Hodgkins, P. Daly, L. Connors, M. Knox and M. Moses.

A second charity, Girls' Inc., was discussed. C. Swasey is involved with this organization in Nashua. There are several in the state of NH, including one in Manchester. It is an organization which provides a safe haven for girls and inspires girls to be strong, smart and bold. Most participants are from single families and often from low income households.

Meals are offered with help from state and federal funds. Volunteer time will be greatly appreciated as well as money and supplies. A motion to accept Girls' Inc as a 2nd charity was made by C. Harrison and seconded by S. Cochis. All members voted to do so. Further discussion of the dollar amount will be at the next board meeting and members were asked to be thinking of an appropriate amount also. K. Lafayette suggested members put together a box of art supplies to donate and to consider making a Christmas box. Carolyn will ask the organization for a list of needs. Carolyn asked members if they would consider volunteering some time with the girls and had a very good response. It was noted that we donate \$250 plus whatever is collected during the year from Tole Gate to David's House and this will continue.

Members are reminded to bring ornaments for David's House and the ornament swap for the November meeting. S. Hodgkins will plan on extra glass ovals if anyone wishes to paint more than one at the afternoon program.

The bag raffle was held by D. Pullo. \$38. was made by ticket sales.

Palette Potpourri drawing was held with the winner being J. Tomlin. She showed and described her terrific colored pencil project of an egret which she had produced at a class with Janelle Johnson.

The meeting was adjourned at 11:46. A delicious lunch was enjoyed, consisting of soups, salad and assorted extras made by our "chef" L. Connors and her assistants. C. Harrison taught her apple design in the afternoon which was a fun project for the upcoming season change.

Respectfully submitted, Marilyn Moses,
WMDPG secretary

*We have a lot of wonderful projects, **afternoon programs, workshops and seminars** planned for the remainder of 2018 and into the new year, 2019. You don't want to miss out on any of these opportunities.*

Afternoon Programs-

November 11, 2018: Sue Hodgkins project is a bird painted on cardstock and then mounted under glass.

Fun new techniques!

January 13, 2019: Chalk painting with Donna Frost. Inspired by Judy Westegard's Chalk It Up book, we're thinking of a favorite saying on a medium size plaque.

Workshops 2019—

TBD: Janice Tomlin (Acrylic) and Suzi Franklin (Colored Pencils)



RETIRED AMERICANA® COLORS & MIXING RECIPES

Following is a list of retired Americana colors and our current color mixes, with ratios, to create those colors.

Antique Teal – DA158
Arbor Green – DA209
Blue Violet – DA141
Cashmere Beige – DAO91
Dusty Rose – DAO25
Eggshell – DA153
Green Tea – DA282
Lemonade – DA252
Mink Tan – DAO92
Naphthol Red – DA104

Orange Twist – DA266
Pansy Lavender – DA154
Pumpkin – DAO13
Russett – DAO80
Shale Green – DA152
Silver Sage Green – DA149
Soft Sage – DA207
Spicy Mustard – DA284
Wasabi Green – DA296



https://decoart.com/resources/Americana_Retired_Colors_And_Mixing_Chart.pdf?fbclid=IwAR1r2s1rwjP2fAPen2o7xqK3WMQ3uBYuRXAWC3Pp6aCVFky_wwApa5EEZZk

Directions...

Directions to: Country Inn & Suites, 250 So. River Road, Bedford NH

From points North, take Rte 3 South/Everett Turnpike, take Bedford Exit. Take a right on Rte 3 and follow this south until you pass IHOP and Canoe, go over the highway, and the hotel is on the hill on the right.

From points South, take Rte 3 North/Everett Turnpike, get off at the Airport exit before the toll booth, Rte 3 Merrimack. Go North on old Rte 3 toward Bedford. The hotel is 2 miles on the left. Get into the left lane just after the set of lights (junction of Animal Hospital/Neurospine Center/Hampton Inn).

From points East, take Rte 101 West 293, get off at the Bedford Exit bringing you to South River Road/Rte 3. Take a Right and follow that until you pass IHOP & Canoe, go over the highway and the hotel is on the right on the hill.

2018 WMDPG Officers & Board of Directors...



President	Donna Frost	603-648-2386	president@wmdpgnh.org
1st Vice President	Sue Hodgkins	603-225-9074	vp@wmdpgnh.org
Newsletter Editor	Carolyn Swasey	603-490-4429	edtor@wmdpgnh.org
Secretary	Marilyn Moses	603-382-5284	esmjmoses@comcast.net
Interim Treasurer	Donna Frost	603-648-2386	president@wmdpgnh.org
Membership Sec	Jacque Seastedt	603-642-5156	join@wmdpgnh.org
Past Pres. Advisor	Carol Howard	603-888-8182	

Board Members	Linda Connors	603-344-4534	lindaconnors@gmail.com
	Melanie Knox	603-529-7129	mek5@gsinet.net
	Dotty Pullo	603-864-0206	rosedpullo@gmail.com
Alternate:	Peg Daly	603-456-2036	peggy114@tds.net

2018 / 2019 Calendar of Events...

November 11, 2018	General Meeting
December 15, 2018	Board Meeting
December 15, 2018	Newsletter Deadline
January 13, 2019	General Meeting
January 19 & 20, 2019	Alene Linton Seminar
February 9, 2019	Board Meeting
February 9, 2019	Newsletter Deadline
March 10, 2019	General Meeting
April 6, 2019	Board Meeting
April 6, 2019	Newsletter Deadline
May 5, 2019	General Meeting
May 13-18, 2019	SDP Nat'l Conference
June 2019 -Date TBD	Concord Market Days
July 15—19, 2019	HOOT Convention
August 10, 2019	Board Meeting
August 10, 2019	Newsletter Deadline
September 8, 2019	General Meeting
October 5, 2019	Board Meeting
October 5, 2019	Newsletter Deadline
October 8-13, 2019	NET Convention
November 10, 2019	General Meeting
December 14, 2019	Board Meeting

2018 Presidential Appointments...

Centerpiece	Kris Lafayette	978-667-5709
Egg & Ornament	Kris Lafayette	978-667-5709
Annual Raffle	Susan Mangano	603-437-3437
Historian	OPEN	
Hospitality	Leeanne Kelly	603-689-8700
Installation Coordinator	OPEN	
Memory Box Program	Marilyn Moses	603-382-5284
	Jackie Seastedt	603-642-5156
	SUSPENDED	
Mercantile	Larry Provencher	603-772-2522
NECC/NET Reps	Carol Howard	603-888-8182
	Kris Lafayette	978-667-5709
NET Volunteer Chairs	Anne Wifholm	603-345-3462
	Kris Lafayette	978-667-5709
Nominating Committee	SUSPENDED	
Paint-Ins	Kris Lafayette	978-667-5709
Parliamentarian	Sue Mangano	603-437-3437
Raffle Coordinator	Peggy Daly	603-456-2036
Secret Pals	Linda Connors	603-344-4534
Service Project/Charity	Sue Hodgkins	603-225-4534
Seminars	Sue Hodgkins	603-225-4534
Workshops	Kris Lafayette	978-667-5709
Chapter Energizer	Linda Connors	603-344-4534
Luncheon Chair	Donna Frost	603-648-2385
Website		

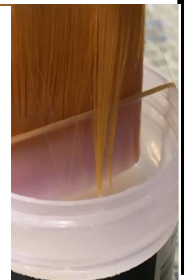
2019 Workshops: Acrylics with Janice Tomlin and Colored Pencils with Suzi Franklin ... Dates & projects to be TBD



Painters tip.—

Source Facebook: Barbara Bunsey of Calico Goose:

Here's a little tip I thought I'd pass on. To keep the lids on the jars of varnish from sticking and letting all those dried pieces fall into the varnish and ruin your painting, put a rubber band around the jar as I have done here. Dip your varnish brush into the varnish, then wipe it on the rubber band to remove the excess. When finished varnishing, remove the rubber band and put the cap back on. Viola! No more stuck lids and "icky stuff" in your varnish!



WMDPG General Meeting...

Date: November 11, 2018
Place: Country Inn & Suites, So. River Road, Bedford

Directions: See page 7

9:00-10:00 The Tables: Palette Potpourri, Chapter Chatter, Coffee, Tea and Ice Water (Compliments of the Chapter) Boards (upcoming events), Goodie Bag Raffle

10:00-12:00 Business Meeting

12:00-12:30 **Lunch Buffet**—Roast Turkey, Sausage Stuffing, Mashed Potatoes, Squash Soup, Cranberry Sauce, Rolls & Gravy.

12:30-4:00 **Sue Hodgkins'** is teaching a Cardinal ornament

Things to Bring to the Meeting

- A Friend or Guest
- Something for Palette Potpourri
- Your painted name tag
- Money for raffles & Fundraiser tickets
- Memory Boxes UNFINISHED/FINISHED/
- Item for David's House
- Brown Bag Goodies
- Your Smile and An Open Heart
- **AFTERNOON Cardinal Ornaments supply list:**

Normal painting supplies (smaller sized brushes will be used).
Clipboard

Paints – DecoArt Americana

Here is the list of paints for the cardinal ornament:

- Uniform Blue
- Black Green
- Burnt Umber
- Santa Red
- Black Plum
- Black
- Snow White
- Bright Orange

November 11, 2018 General Meeting Afternoon Program Registration Form—

Name: _____ Phone: _____
 Guest: _____ Email: _____

<i>Please indicate the following:</i>	<i>Pre-registered</i>	<i>Guest</i>
Business Meeting	Yes / No	Yes / No
Afternoon Project /surface, photo & instructions	Yes \$11/ No	Yes \$11/ No
Lunch – Turkey with all of the fixings	Yes \$10/No	Yes \$10/ No


Make checks payable to: WMDPG **Total Enclosed:** _____

Mail to: Jacque Seastedt
49 Sandown Road
Danville, NH 03819
603-642-5156

Email: jjoin@wmdpgnh.org

Cardinal under Oval Glass Ornament—Class fee includes: one glass ornament, base coated cardstock for two pieces, Decoupage, twinkles and the packet.

Second glass ornament is included in the fee. Please note: the glass oval maybe slightly larger or smaller. .



White Mountain Decorative Painters Guild

Arlene Linton Seminar

Saturday, January 19, 2019

Sunday, January 20, 2019



Winter Wreath Candleholder



Snow Flake Coasters

Acrylics

9:00 – 4:00 each day with 1 hour for lunch

Southern NH Location TBD (soon)

Class fee is **\$60 per day**.
Surface and palette **fees TBD**.

Coffee, Tea and breakfast treats will be provided in the morning
Bring your own lunch - (one hour break for lunch)
Afternoon dessert provided.

To hold your seat complete this form and send it along with a check (payable to WMDPG) to Sue Hodgkins, WMDPG Seminar Coordinator, 125 Portsmouth Street, Concord, NH 03301

Questions? – Sue Hodgkins – denantquty@aol.com or 603-225-9074

✂ -----
Saturday, January 19th class fee \$60.00 _____

Sunday, January 20th class fee \$60.00 _____

Total \$ _____

Name: _____

Street: _____

City _____ State _____ Zip _____

Phone _____ E-mail _____



Wishing you a *blessed* and
Happy Birthday!

*If your birthday is not
listed please contact
Leeanne Kelly at
lkell13@comcast.net*

November: Betty Vitale (9), Peggy Daly (19)

December: Fran Gelinas (5), Carol Bell (6), Linda
Connors (14) and Kathleen Tanguay (21)

January 2019: Helene Bouchard (29)

Newsletter Palette Potpourri...



Members sharing what
they have painted.
Does this motivate you
to bring in a piece to
share at our next meet-

Members voted Janice Tomlin's
color penciled piece as their
favorite for the day. The de-
signer was Janelle Johnson and
she taught an August seminar
for Seastrokes in Maine.



Brown Bag Auction...



Think about bringing in paint related
STASH items for our Brown Bag Auc-
tion. The proceeds benefit David's
House. You may be surprised on what
you find inside. Dotty-I love the pants
(Carolyn).

Girls Inc—2019 volunteer project

Girls Inc. has facilities located in Nashua and Manchester NH.
To find out more about the organization, I am providing their
link: <http://girlsincnewhampshire.org>

Several members signed up to volunteer their time & talent at
the September meeting. More information to follow in Janu-
ary. Because we will be dealing with children, we must be

Tribute to Margie Rowe....



Margie Rowe's service will be held
Monday, October 22nd at Smith &
Heald Funeral Home, 63 Elm St.,
Milford, NH. Services will be held
from 2-5pm.

If you can, please join your fellow
WMDPG members who plan on at-
tending this service. Thus far I have
heard that Cindy Harrison, Kris Lafa-
yette, Debbie Fortin, and Paula
Brown (so far) will be going around
2:30 -3.

She was a great lady and will be
missed. She frequently told Linda
Connors, that Arnie would be wait-



**2019 Raffle update. The Raffle Prizes are all
painted...**

**Thank you to the 12 ladies who volunteered to
paint a quilt square. Hats off to Suzi, as well, for
agreeing to paint the Tuffet triangles. The unveil-
ing will happen at the March 2019 meeting .**

Sincere gratitude extended to the 2019 Raffle Volunteers: Pau-
la Brown, Susan Mangano, Sue Duffy, Peggy Daly, Linda
Connors, Dotty Pullo, Mae Snell, Melanie Cox, Carol Bell,
Cindy Harrison, Fran Gelinas and Debbie Fortin and Suzi
Franklin.
(Carolyn)



NET—Mark Your Calendar...

[New England Traditions: October 8-13, 2019](http://www.newenglandtraditions.org/)

<http://www.newenglandtraditions.org/>

NET 2018 VOLUNTEER/MONITOR STATION REPORT

The Volunteer/Monitor Station was the assigned job of the White Mountain Decorative Painters Guild for 2018. This is a very big job and both Anne Wifholm and I spent over 80 hours staffing this room, cleaning classrooms, and helping Teachers with their class supplies. Previous to the convention Anne and I spent approximately 30 hours gathering information from NET attendees, by email and phone. We asked about their availability to Monitor specific classes, and their class schedules. We especially needed people to volunteer to tidy up the classrooms after their class and to clean the rooms at the end of the day. Volunteers were recruited before and during Convention. We were asked to supply Monitors for Seventeen (17) classes, all with 25-50 students per class.

Many people stepped up to Volunteer from WMDPG. We would like to thank our Number One Volunteer from White Mountain, Cheryl Barb. Cheryl chaired this job last year and her help was greatly appreciated. She cleaned many a classroom (with Anne) at the end of some very long days and we appreciate all of her help and advice.

Over 50 people volunteered their time including 20 people from WMDPG. We would also like to thank the pin painters: Paula Brown, Kathy Tanguay, Debbie Fortin, Cheryl Barb, Melanie Knox, and Anne Wifholm. Each volunteer, from all Chapters at NET, who gave six (6) hours or more of service received a "Whale of a Pumpkin" hand painted pin, designed by Cynthia Erikson, NET 2018 Convention Artist.

White Mountain members volunteered over 220 hours of their time before and during NET. A big Thank You also goes to the White Mountain members who donated daily prizes to each day's volunteers. They



Thank you Cindy Harrison for teaching the fall themed afternoon program at the September meeting...

2018 NET Pin Painting Volunteers...



Thanks to all who signed up to do a little painting. We ran out of enough time to schedule a "painting party" -- the cut out blanks arrived after I left on a 3-week vacation in May.

Over the summer, it was just impossible to get members together. So the pins were farmed out along with Cynthia Erikson's pattern and instructions. --They all came back looking gorgeous!

Thank you one and all: Paula Brown, Kathy Tanguay, Debbie Fortin, Cheryl Barb, Melanie Knox, and Anne Wifholm

Anne

The Brown Bag Raffle..



Clean out your unwanted treasures and bring them to our White Mountain Guild meetings to raffle off! You may place them in boxes, brown or plastic shopping bags, whatever works for you...will work for the Guild. What a great way to evaluate your supplies, make room for new ones and earn money for our guild all at the same time. Treasures may include surfaces, books, patterns, painted items, paint and so much more.

General Meeting Raffle Rules

- Raffle held at general meetings
- Members will bring bagged or boxed items to be raffled in new or like new condition
- Painting supplies, surfaces, paint, mediums, books, magazines, useful items
- Painted items
- Tickets will be sold at that general meeting
- Drawing for these items will be at the same general meeting
- All proceeds go to White Mountain Decorative Painters' Guild

Meeting/Event Cancellation Policy...

Cancellations for any WMDPG Event/Meeting will be posted on our website and/or Facebook page: www.wmdpgh.org

<https://www.facebook.com/White-Mountain-Decorative-Painters-Guild-357770294262956/>

no later than 8:30 am on the day of that activity. If you do not have access to the internet, please call a friend who does or call any Board Member. (See Page 2 for phone numbers.)

Policy—for Missed Events Project Pieces...

If an individual paid for a class and is unable to attend, arrangements must be made to obtain the materials within 2 months or by the next General Meeting. Otherwise, the class project will revert back to the Guild with no refund.

David's House Wish List...

Paper towels
Tissues
Paper plates & bowls
Plastic utensils
Paper cups - 5 oz. only
Laundry detergent - powder
Kitchen sponges
Dishwashing liquid
Liquid hand soap
Dryer Sheets
Stain Removers
Juice boxes, Concentrated juices
Cookies and crackers
Cereal Bars
Cereal - single serving and regular
Pop tarts
Fruit snacks
Applesauce
Pudding Snack cups
Microwave Popcorn
Single serving microwave meals
Soups (small size)
Beef stew (small size)
Coffee creamer (powder)
Spaghettios/Ravioli (reg. size)
Sanitary napkins
Tampons
Panty shields
Nursing pads (disposable)
New DVD's (family appropriate)
Wii Games (teen rated or lower)
-don't worry about duplicates!
Postage Stamps

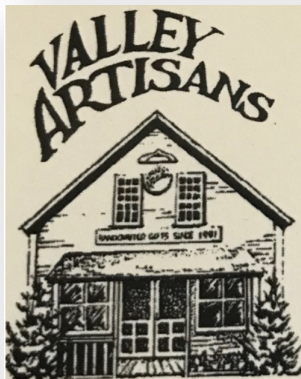
Gift Cards are always appreciated:

Phone Cards
Lebanon Co-Op
Wal-Mart

B.J.'s
Shaw's Supermarket
Best Buy
Home Depot
K-Mart
Hannaford's Supermarket
Irving

New Items Only Please

You can also bring in cash and Linda Connors' has graciously agreed to go shopping before making the delivery to David's House.



Handcrafted Gifts

Craft Shop Cooperative
10 Goboro Road (off Route 4)
Epsom, NH 03234
(603) 736-8200

Wed - Sun • 10AM - 6PM
7 days a week Nov - Dec 24th

facebook.com/valleyartisansnh
www.Handcraftednhgifts.org
nh.valley.artisans@gmail.com

"Giving Back to WMDPG"...

The teachers listed below will give 5% of your total to WMDPG when you purchase items from their website. You must tell them you are with WMDPG at the time of your order.

Rebecca Baer - rebeccabaer.com
Cindy's Decorative Painting - www.cdpmh.com

SDP Member Discounts...

Patterns/Supplies: Art Factory, Cupboard Distributing, Erika Joanne Designs, Just Fine Designs, Kingslan & Gibilisco Decorative Arts, Scottie's Bavarian Folk Art, Turn of the Century Wood Products, Viking Woodcrafts

Supplies: B&B Etching Products, Inc., Earmark Decorative Painting Studio, Jo-Ann Fabric's and Crafts stores

Surfaces: Homestead Design (Gourds), Porcelain Treasures of Ohio

Online Painting Opportunities: Art Apprentice Online, Interactive Artist Magazine

*New Year approaching and we need
NEW VOLUNTEERS*

We are only as GOOD
as our Volunteers...

Website Updates...

<https://wmdpghn.org/>

The Guild's website is up and continues to be updated by Cindy Harrison and her son Alex. Please be patient as they continue to work on improving our site.

Advertising Rates ...

Ad copy and checks should be sent to:
Carolyn Swasey
10 Berkshire Ln
Londonderry, NH 03053

Any Questions? Email Carolyn
at :Wmdpghcarolyn@outlook.com or call
603-490-4429

MEMBER

NON-MEMBERS

	1 Issue	5 Issues	1 Issue	5 Issues
Full Page	\$30.00	\$135.00	\$40.00	\$180.00
Half Page	\$15.00	\$67.50	\$20.00	\$90.00
1/4 Page	\$7.50	\$33.75	\$10.00	\$45.00
Business Card 3.5X2"	\$5.00	\$22.50	\$7.50	\$33.75
Little No- tices Bul- letin Board	\$1.00	N/A	N/A	N/A

Ad Submission deadline December 15, 2018

WMDPG Painters' Attic Sale ...Reserve table for the 11/10/18 meeting

Painter's Attic Sales started at the 2014 meeting, WMDPG would like to continue to extend an invitation to it's members to sell their goods (painting related) at our meetings. It was decided that two members would be able to 'rent' a table at each meeting. If you are interested, please contact me. One painter's stash is another painter's treasure!!!

Donna Frost, President

Phone:603-648-2386 / email: president@wmdpghn.org

Share-Ins can be offered by a Teacher, a Shop, a Studio or a Host/Hostess. These programs are usually for a specific purpose such as to paint for Memory Boxes, centerpieces or any other designated project. There are no fees paid to the teacher or any charges/costs for attendees/painters. Several painters/members get together to paint for a common project. This is a great way to share the love of painting and do something for the Chapter.

WMDPG—SDP... News

Banquet tables are decorated each year at SDP's Annual Conference by volunteers. The result is an amazing variety of table decorations. Volunteers from our chapter have sponsored a table for several conferences so at the October WMDPG Board Meeting, I asked the board to support this idea for 2019. As a reminder, our chapter provides a generous stipend so our VP/President-Elect may attend. Next year it will be Peg Daly. Melanie Knox and I plan to attend and hope others will, too.

A painting party will be held at my house at a date TBA. We think we will make placemats from RocLon which Linda Connors will donate. We hope to find a suitable centerpiece from the surfaces donated by former members Ginny Dandretta and Jill Greene. We'd like our theme to be representative of New Hampshire. One time it was pumpkins (Gloria Koskey designs) and small bottles of maple syrup as favors. Anyone who would like is welcome to come to the painting party which will probably be after the holidays. Stay tuned!

This is from the information received from SDP:
We need your help in the decorating of the 47th Annual Conference and Expo Banquet tables in Wichita, KS. The dates are May 13-19th, 2019.

Many of you send a representative from the board to the conference. If not the board, please open up your invitation to a member of your chapter so they might experience the wonderful friendships and class environment of a National Convention. It truly is something wonderful! The Hotel rooms are \$119 for a double occupancy and if this is split, then the experience can be affordable. There are so many special events that will be going on, you will not want to miss it.

*The Theme this year is **Party in the Heartland**. You will need to provide eight table setting mementos and a center piece. The centerpiece should not exceed the height of 16". Keeping with the theme, your imagination is wide open as to what your chapter does. Some examples are placemats with painted glasses and a painted bucket filled with goodies for the centerpiece, adorned with flowers. One chapter painted umbrellas for each place setting with a centerpiece filled with their state's mementos. (Myrtlewood, chocolate, brushes, a "Ducks" shirt, etc.) Another chapter painted a Boot for the Centerpiece filled with brushes, flags and a special painted boot for each place setting. The ideas run wild.*

Our VP is required to attend the Chapters and Members Gathering which focuses on an idea and information exchange among members. For fun, in the past there has been an exchange of small painted items but this year the Chapters Committee plans something different - **PAINT FOR THE CHILDREN!!**

SDP has united with many local businesses and chapters in the Wichita area to help fill backpacks for the Foster Care System. Many of you may not know that children are rescued from horrific conditions every minute in this country. They are whisked to safety with only what

They have on, or their belongings are stuffed into garbage bags. Now is the time to come together and put our talents towards making a child smile.

*Bring your New **hand painted** backpack to our 47th Annual Conference and Expo Chapters Gathering in Wichita. They will be displayed during the Chapters Gathering meeting and a wonderful painted prize for the Most Favorite Backpack will take place. More so, these wonderful painted backpacks will find homes with a wonderful child.*

We are still at the idea stage and considering donating more than one painted backpack and having another painting party someplace. Once we know the cost per backpack we can make a decision and we will have more discussion at the November general meeting.



On June 11, 2018, SDP announced that an agreement had been reached to be come the new home for the beautiful art work from the National Museum of Decorative Painting. Despite lack of space in Wichita, and no time to do a lot of planning, truck, staff, and volunteers traveled to Atlanta to inventory, pack and bring the artwork to Wichita. This is our heritage and we need to preserve it. This move was costly so SDP issued a plea for donations to cover expenses. At the August board meeting, the WMDPG Board voted to donate a total of \$100. SDP has made a fun process of opening one box on Fridays for every \$100 received. SDP members can watch the Friday videos on the members only Facebook page: SDP: An Artful Connection. Each Friday is a wonderful history lesson explaining each piece. The comments posted by various SDP members. The videos are archived on the Facebook page so they can be viewed at any time and SDP appreciates further comments and notes to help add information about the pieces. Janelle Johnson narrated and unpacked the 10/7/18 video. Each video is an education.

The Society of Decorative Painters was saddened to hear the news about the closing of the National Museum of Decorative Painting (formerly the Decorative Arts Collection) in Atlanta, GA.

We want to reassure our members that this closure does not affect the International Museum of the Society of Decorative Painters (IMSDP) or the Society of Decorative Painters (SDP). The National Museum of Decorative Painting is not part of the Society of Decorative Painters. It is a separate organization formed 36 years ago with a mission to collect, preserve and exhibit decorative painting and artwork.

The separation between the Society of Decorative Painters and the National Museum of Decorative Painting has been a long-standing source of misunderstanding by our members. Our members will remember that the Decorative Arts Collection was on display at the SDP headquarters for many years. However, in 2007 under the leadership of Andy Jones CDA, the DAC moved to Atlanta, Georgia and changed their name to the National Museum of Decorative Painting.

Both of our organizations have worked over the years to promote decorative painting. Our members have generously given of their talents to provide a beautiful display of both current and traditional decorative art to the National Museum of Decorative Painting. Many of our members and chapters have been supporters of the museum.

The Society of Decorative Painters and the International Museum of the Society of Decorative Painters (IMSDP) will continue to have its beautiful collection of art located at 1221 East First Street, Wichita, Kansas. The museum is open by appointment to our members and the public.

IMSDP is a 501(c)(3) charitable organization recognized by the Internal Revenue Service as a museum and able to receive tax-deductible contributions. We encourage your contributions to IMSDP to ensure the continued appreciation for decorative art.

Please! Print as many as you like, then print some more!

Sell them to your friends and family. Teachers, bring them to your studio and sell to your students.

Fundraising Chair: Susan Mangano 603-437-3437 paintatheart@yahoo.com



WMDPG
2018

WMDPG
2018

\$1.00 Each or 6 for \$5.00
ENTER TO WIN!

Thank You!

Name: _____

Address: _____

Phone: _____

Drawing is at the January 2019 meeting



WMDPG
2018

WMDPG
2018

\$1.00 Each or 6 for \$5.00
ENTER TO WIN!

Thank You!

Name: _____

Address: _____

Phone: _____

Drawing is at the January 2019 meeting



WMDPG
2018

WMDPG
2018

\$1.00 Each or 6 for \$5.00
ENTER TO WIN!

Thank You!

Name: _____

Address: _____

Phone: _____

Drawing is at the January 2019 meeting.



WMDPG
2018

WMDPG
2018

\$1.00 Each or 6 for \$5.00
ENTER TO WIN!

Thank You!

Name: _____

Address: _____

Phone: _____

Drawing is at the January 2019 meeting.

2019 Membership Application — Society of Decorative Painters

Name: _____
Last First Year Joined

Address: _____

City _____ State _____ 9 Digit Zip Code _____

Phone () _____ Check box if this is a new address

New Renewal Membership# _____

Chapter Affiliations: _____

E-Mail Address _____ Website: _____

- INDIVIDUAL MEMBERSHIP (US only): **\$60**
- INDIVIDUAL/BUSINESS ASSOCIATE: **\$90**
- HOUSEHOLD MEMBERSHIP **\$40**(for immediate family member sharing same address)
- TRIAL MEMBERSHIP **\$40** (for new members who want an on-line copy only of the Decorative Painters)
- STUDENT MEMBERSHIP **\$20** (online magazine only) (documentation must be provided)

Check Enclosed (payable to SDP) or CHARGE my: Visa MC

Card No.: _____ Exp. Date: _____

Total \$ _____

Date: _____ Signature: _____

Mail form and payment directly to:

SDP
1220 East First Street
Wichita KS 67124
or:

Join online at:

<https://www.decorativepainters.org>

2019 Membership Application — White Mountain Decorative Painters' Guild

You must be a current member of the SDP to be a member of WMDPG.

Name: _____
Last First Year Joined

Address: _____

City _____ State _____ 9 Digit Zip Code _____ *Check box if this is a new address:*

Phone () _____ E-Mail Address _____

SDP Membership # _____

New Member \$15.00 Renewal \$15.00

- Newsletter Hardcopy add \$10/year (optional)**
- I do not have a computer! Mail for Free!**
- Do not list email / phone to Membership

Let Us Wish You Happy Birthday: MM _____ DD _____

Shop Owner Teacher Student

Would you be a teacher at a meeting or a workshop? Yes___ No___
Medium Taught _____

Would you be willing to be contacted for rides? Yes___ No___

Today's Date: _____

Referred By: _____

**Please send form and payment
(check made payable to WMDPG), to:**

Jacque Seastedt
49 Sandown Road
Danville, NH 03819
603-642-5156

**Email: jseastedt@comcast.net
or join@wmdpgnh.org**

Questions? Call Jacque Seastedt , 603-642-5156 or email at: join@wmdpgnh.org